

Resource for Wisconsin Dogs & Their Owners

# Fetch

Spring 2009 Volume 6 Issue 2

## *Magazine*



WI Canine-Friendly Lodging | Running Around Naked | Unusual Toys | Alaskan Malamute



Read this issue & more at  
[www.fetchmag.com](http://www.fetchmag.com)



**Paws-itivity  
Behaved K9s**  
Train by "Power of the Pack"  
Puppy & Adult Obedience Classes  
Advanced Training Classes

**AKC Registered**  
Group Sessions / Private Training (In-Home Available)  
Problem Behavior Counseling & Evaluation

**3 Locations to Choose From**

9823 S. 13th St. Oak Creek	3473 Hwy 60 Jackson
8745 N. 51st St. Brown Deer	

**21 Years of Training Experience**  
**Member of APDT & IAABC**

**Don't have time to train?**  
**We can do it for you.**

Weekly & Monthly Packages Available

**262-488-1982**  
**www.pawsitivityk9s.com**



*Designs  
That  
Speak!*

**DoggyToyland.com**  
LLC

**www.doggytoyland.com**  
715-345-1314  
myra@doggytoyland.com  
Sterling Silver and 14K Gold  
© Doggy Toyland - Made in U.S.A.



**Treat your pooch  
like a king...**

**after all, isn't he one?**

**Homemade, All Natural Treats**  
\*100% Certified Organic Flours and Select Ingredients\*

**Hop in for Easter Treat Specials  
and St. Paddy's Day Treats**

Muddy Paws | Canolis | Allergy Sensitive | Celebration Cakes | Training Tidbits  
Cool Cat Cookies | Good Boy/Girl Bones | Freeze-Dried | Gour-mutt Boxes

**Events Held Monthly**  
Animal Communication | Photo Sessions | Original Yappy Hour | Canine Massage  
Working w/ Crystals | Puppy Kindergarten | Nutrition & Supplement Seminars



**Petlicious Dog Biscuits Bakery & Pet Spa**  
2217 Silvernail Road in Pewaukee  
**www.petlicious.com**    **Info@petlicious.com**  
**(262) 548-0923 • (262) 522-7860** (Pet Spa)

**STOP the ABUSE**  
**END the MISERY**



**NoWisconsinPuppyMills.Org**



## Been waiting for suitable day care for your dog?

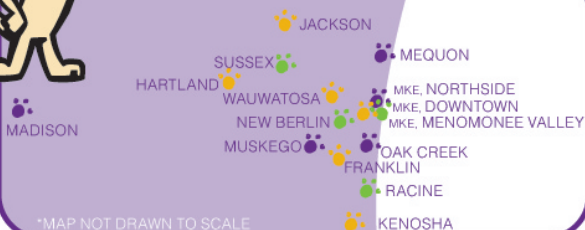
If your dog is more like your child, you're not alone. And neither is your dog. Vet recommended and doggy preferred, Central Bark Doggy Day Care is the hottest place in town!

Grooming • Doggy Boutique • Training • Sleepovers • Parties



18 plus  
Locations to better serve you!

Check our website to find a location near you!



\*MAP NOT DRAWN TO SCALE

[www.centralbarkusa.com](http://www.centralbarkusa.com)

# Animal Doctor

## HOLISTIC VETERINARY COMPLEX

Jodie Gruenstern, DVM, CVA • Rebecca McCracken, DVM, CVA

Integrated Pet Care and Physical Rehabilitation That Will Exceed Your Expectations!

### Full Service Veterinary Clinic and Natural Pet Retail Shoppe

- Counseling on wellness and disease
- We discourage excessive vaccinating

#### • In the Annex •

Educational classes on many topics, including raw diets, essential oils, acupressure and pet behavior.

Check our website for schedules.

• Feline Bed'n'Breakfast •  
If you need to board your cat, ask about our cozy accommodations.



We are your best resource for natural nutrition and supplement guidance!

### Romp & Rehab Canine Physical Rehabilitation:


- Rehabilitation, Conditioning and Nutritional Evaluations
- Underwater Treadmill Therapy
- E-stim, Laser
- Ultrasound Therapy
- Therapeutic Exercise
- Veterinary Spinal Manipulation
- Massage, Reiki
- Acupuncture



Animal Doctor is one of only a few facilities in the state to offer physical rehabilitation overseen by a veterinarian who has been trained in canine physical rehabilitation.

573 W16790 Janesville Rd. • Muskego • 414.422.1300 • [animaldoctormuskego.com](http://animaldoctormuskego.com)

## Alan Canvas Art Pet Portraits



*Fine art virtual paintings  
from your photo or ours.*

**Simply Beautiful!**  
Pet portraits in the Old  
Masters style on art canvas  
with brushed acrylic finish.

www.alanfineartphotography.com  
920-452-4244

**ALAN**  
Fine Art Photography

**It's the Perfect Gift for Animal Lovers!**

**The Animal Fairy®**  
The guardian of all animals

Sculpted by Renowned artist John Reichert in timeless pewter

- Honor Someone • Pay Tribute to someone • Memorialize a pet

*Best of all, part of the proceeds will go to help  
fund Wisconsin Animal Rescues!*



actual size  
4" wide X  
3-3/4" tall

**Desk Piece  
\$24.95\***  
or Holiday Ornament  
**\$19.95!\***  
\* plus \$3.95 shipping & handling

Comes with a  
certificate of  
authenticity

www.animalfairycharities.org • 262.989.1345  
Animal Fairy Charities is a 501(c)3 non-profit organization

## SPRING Camp: May 22-25, 2009 FALL Camp: Oct. 9-12, 2009



**CAMP DOGWOOD, Inc.**

**WHERE YOUR DOG CAN BE A DOG**

**Early Registration  
for BOTH Spring & Fall  
APRIL 1st**

*Less  
Than  
One  
Hour  
from  
Milwaukee!*

**We are an overnight camp experience for BOTH you and your dog. Sample a variety of dog-related activities like Agility, Flyball, Tracking, Lure Coursing, Hiking, Swimming...and more. Visit website for more info about our camps.**

**(312)458-9549 www.CampDogwood.com**

## CUTEST PET CONTEST

Enter our contest and you could be displayed on our website.  
Photographs must be taken by May 31st, 2009.

Grand Prize: 16x20, 1st Place: 11x14, 2nd Place: 8x10



**\$25 OFF SESSION FEE**

IN-FOCUS PHOTOGRAPHY ~ (414) 483-2526 ~ www.infocusphotography.org

## Just Like Home Doggie Motel



Loving care for your dog in a home setting. Lots of space, combined with limited occupancy (10 dogs), allows us to provide the individualized care that your dog truly deserves.

- Great-Room for indoor play.
- 24 Hour Supervision.
- Dog-Friendly Dogs Only.
- 12,000sq. ft. Outdoor Play Area.
- Quiet Rooms for feeding & Bedtime.
- Only \$25 per Day, \$30 for puppies.

**Phone: (414) 640-0885, (920) 927-1922**  
**E-mail: JustLikeHomeDM@aol.com**

# Fetch

## Magazine

**Spring 2009**  
Volume 6, Issue 2

**Publisher**  
Joseph Kojis

**Design and Production**  
Jennifer Kojis

**Contributing Writers**  
Sara Blackthorne  
Jamie Klinger-Krebs  
Emily Refermat  
Jean Scherwenka  
Anne Skaradzinski  
Daryl Skaradzinski  
Marie Tubbin  
Keri Weyenberg

**Ask the Vet**  
Dr. Sandra Miller  
Creature Comforts Veterinary

**Training Bits**  
Khris Erickson  
HAWS

**The Legal Beagle**  
Megan Senatori  
DeWitt, Ross & Stevens, S.C.

**Contributing Photographer**  
Stephanie Bartz  
stephaniebartz photography

**Advertising**  
Increase your customer base by reaching current and future dog lovers with Fetch Magazine. For more information, visit [www.fetchmag.com](http://www.fetchmag.com), call 262-544-9927 or email [info@fetchmag.com](mailto:info@fetchmag.com).

**Photo Submissions**  
If you would like to submit photos of your dog, please use the following means: E-mailed submissions are preferred at [info@fetchmag.com](mailto:info@fetchmag.com). If hard copy only, mail to: Fetch Magazine, 1215 Tomahawk Court, Waukesha, WI 53186. Include following statement with signature for all photo submissions: I grant Fetch Magazine permission to reproduce my photo(s). Signed by: If you would like photos returned, please include a postage-paid, self-addressed envelop.

**Fetch Magazine**  
1215 Tomahawk Court  
Waukesha, WI 53186

**p: 262-544-9927**  
**f: 262-547-6679**  
**e: [info@fetchmag.com](mailto:info@fetchmag.com)**  
**w: [www.fetchmag.com](http://www.fetchmag.com)**

Fetch Magazine is available free due to the support of our advertisers. Please support the businesses that support us and remember to tell them you saw their ad in Fetch Magazine.

Fetch Magazine™. All Rights Reserved. Reprinting in whole or in part without written consent from the publisher is strictly prohibited.

## table of contents

Ask the Vet: Arthritis Treatment Options	6
Training Bits: Prepping Your Dog for the Workplace	8
Humane Society Adoptables	9
Around the Waterbowl	10
Breed Profile: Alaskan Malamute	12
Ok to Run Around Naked?	15
CranioSacral Therapy for Animals	16
Wisconsin Canine-Friendly Lodging	18
Canine Marketplace	20-25
Canine Rehabilitation	26
The Canine-Factor of Dating	28
Jale's Story	30
Calendar of Events	32
Losing Those Extra Winter Pounds	34
Breed Rescue Directory	35
Unusual Toys	36

**Online Only Features Found at [www.fetchmag.com](http://www.fetchmag.com)**  
**Dogs w/ Disabilities:** Reader-submitted stories of heartache and triumph.  
**Dogs Around Town:** Reader-submitted photos of neighborhood canines.

## {Publisher's Letter}

Media reports have shown every industry reeling in this poor economy...except for the pet industry. Do you believe this is accurate? Whether you've completely cut out luxuries for your companion or price-shop a little closer, it's become clear that Americans are placing a higher value on every dollar we earn. Our Spring '09 issue is here to help.

The hints of warmer weather typically give thoughts to summer vacations. Years ago, destinations such as Hawaii or the Caribbean were at the top of the list. Times have certainly changed. Now we're looking closer to home and getting reacquainted with our surroundings. While there are thousands of hotels, motels, resorts, and camp grounds within a few hours from home, not all welcome four-legged patrons. To help you locate the perfect place of lodging for the 'entire family,' flip over to page 18.

Along with warmer weather comes summer lovin'. If you're single and a dog lover, you may not consciously know it, but your dog plays a bigger role in choosing your future mate than even you do. How is this possible? Flip over to page 28 and you'll learn about the canine-factor of dating.

*Joseph & Jennifer Kojis*

# { Ask The Vet }

**Question:** What options are available to treat arthritis in my dog?

**Answer:** There are a multitude of options to treat arthritis in dogs. Most of us are aware of arthritis medications and of the side effects of these drugs. So, before considering using these strong medications, consider some of these other options instead of, or in conjunction with lower doses of these drugs.

In arthritic cases, be sure to watch for signs that your dog is in pain. Signs include avoiding the stairs, lying down more often, inability to walk as far as usual, reluctance to jump into vehicle, stiffness when rising, limping, licking one area excessively, etc. Pain can often be controlled with the use of the treatment options listed below. Most importantly, the animal needs to be comfortable, so if all else fails, please use the prescription medication for pain control at the lowest dose possible.

There are a variety of popular supplements used to protect/heal the cartilage and ligaments in the joint, such as glucosamine. Supplements are considered "nutraceuticals" and are not regulated by the FDA. This means that the bottle may say that

there is glucosamine added, but it may not be in a biologically available form. Which means it will not benefit your pet. There are numerous manufacturers out there, so consult your holistic veterinarian for the best one for your pet.

There are a variety of treatment options too. These all need to be performed by a licensed practitioner. These treatments are not invasive and generally well received by pets. Examples include essential oil application, herbal medicinals, massage, rehabilitation therapy, spinal adjustments, reiki and acupuncture. These provide an excellent source of pain relief with minimal to no side effects. A massage and rehabilitation therapy program can be designed for your dog by a qualified practitioner, and followed through at home by the owner.

**Dr. Sandra Miller**, Creature Comforts Veterinary, can be contact at: housecall-vet1@sbeglobal.net

## Who's Your Daddy?



Discover the breeds present in your mixed breed dog through DNA analysis.

Easy to use  
Understand your dog's behavior,  
potential health risks and personality

Only \$52

**Fluffy Dog Wellness**  
Enhancing Your Pet's Health  
[www.fluffydog.net](http://www.fluffydog.net)  
**262-538-2535**

Sign up for email  
newsletter at  
[www.fetchmag.com](http://www.fetchmag.com)

## DOG Training Classes



4500 West Wisconsin Avenue  
Milwaukee, WI 53208



To Register, go online at  
[www.wihumane.org](http://www.wihumane.org)  
or call (414) 431-6107

All classes below use reward based training techniques through the use of a clicker. Puppy ABC's, Dog Manners, and Beyond Manners Classes all run for 6 weeks and are \$100 (WHS Adopted) and \$120 (Non-WHS Adopted).

**Puppy ABC's Class** (under 5 months):  
Socializing your puppy and discussing common challenges.

**Dog Manners Class** (over 5 months of age):  
Basics like down, stay, drop it, come and much more. Learn all the skills needed to pass the Canine Good Citizen test.

**Beyond Manners Class** (over 6 months of age):  
Build from basics & add distractions to challenge your dog.

**Shy Dog Class** (over 6 months of age):  
This four-week course is designed for dogs that are fearful or shy of people, other dogs, objects, noises, etc. In these sessions, we use desensitizing and counter conditioning techniques. All dogs \$60.00

**Clever Canine Tricks Class** (over 6 months of age):  
Teach your dog to be creative and learn how to get the behaviors you want from your dog (not just tricks!). Length: 4 weeks. All dogs \$60.00

**Behavioral Consultations:** One-on-one assistance & training to solve behavioral issues. (414) 431-6173  
**Dog** (per session): \$75 (WHS Adopted) \$90 (non-WHS Adopted)  
**Cat** (per session): \$30 (WHS Adopted) \$35 (non-WHS Adopted)

## Got Pet Nutrition? WE DO

Shepherd  
Best of Milwaukee  
2008

NATURAL  
dog and cat  
food store



## Bark N' Scratch Outpost

5835 W. Bluemound Rd  
**414-444-4110**  
[www.milwaukeepetfood.com](http://www.milwaukeepetfood.com)

The Friends of **HAWS** invite you to celebrate  
**Be Kind to Animals Week** with us at the

## **26<sup>th</sup> Anniversary of HAWS Pet Walk-A-Thon**

In support of the Humane Animal Welfare  
Society of Waukesha County



**Saturday May 2<sup>nd</sup>, 2009**

Minooka Park, Waukesha

9:00 am - 3:00 pm

Fun for the whole family!

This year individual walkers can create their own  
personal fundraising web pages. Click over to  
[www.hawspets.org](http://www.hawspets.org) for details.

For more information call HAWS at  
262-542-8851 or check out  
[www.hawspets.org](http://www.hawspets.org).



Mark Your Calendar

# **PET WELLNESS EXPO**

**Saturday, April 18th 2009**

**9:00 a.m. to 3:00 p.m.**

Burlington High School

400 McCanna Parkway

Burlington, WI 53105

**262-767-9392**

Agility Demo | Parade at Noon | Animal Shelters &  
Rescue Groups | Unique Animal Collectibles | Tons of Holistic Care Info

Please do not bring your pets... Exhibitor Animals ONLY!

**<http://PetWellnessExpo.com>**

This event sponsored by Fetch Magazine.

# Training Bits

## Tips for Preparing Your Pooch for His First Day of Work

If you're lucky enough to have an employer willing to allow furry workers, here are some tips to help you prepare yourself and your pooch for a successful first day.

- Only bring well-socialized friendly dogs to work. Don't try and use the workplace as a socialization opportunity for a shy dog - you run the risk of making your dog worse, or having your dog snap at a co-worker out of fear.

- Bring your dog to work with you several times for short visits so that he gets used to the environment before you bring him for an entire day. Make sure these short visits are a positive experience for him - have co-workers give him treats.

- Teach your dog a cue like "go lie down" that tells him that you won't be paying attention to him and he needs to go to his bed and relax.

- Teach your dog stay - so that he isn't pacing back and forth between his bed and your desk chair.

- Make sure your dog is comfortable being confined to a crate - it may be



necessary to crate your dog at times while at work.

- Take your dog for walks on your lunchtime - it will allow him to stretch his legs and make settling down for the afternoon easier. Make sure you clean-up after him and dispose in appropriate containers.

- Bring a pillow or dog bed to work with you that your dog has been using at home. It will make the office more home-like and relaxing for him.

- Bring plenty of non-squeaking chew toys for your dog to work on throughout the day. Find toys like Kong® that you can stuff with food. Store one or two in the freezer if you have one at work, and bring them out at times when your dog is getting antsy.

- Reinforce your dog for chewing on his toys, not bothering you, or relaxing on his bed by calling him over for attention and petting by you. It will make it more likely that your dog will relax while at work, and it will reduce the stress you may be feeling during the work day.

Above all, make sure you're still able to work at work. If you're constantly playing with your pooch or worrying where he is or what he's getting into, it may be best for him to stay home.

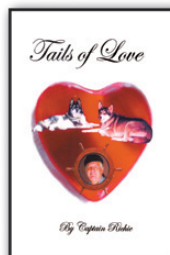
**Khris Erickson** is a Certified Pet Dog Trainer and Humane Educator. Her dog Mystic shares her office at the Humane Animal Welfare Society.

Read this issue & more  
online at  
[www.fetchmag.com](http://www.fetchmag.com)

Just Published ...

## Tails of Love

by Captain Richie



You'll laugh. You'll cry.  
You'll feel a tug at your heart.

[www.captainrichie.net](http://www.captainrichie.net)  
email - [rpuls@wi.rr.com](mailto:rpuls@wi.rr.com)

## THE NATURAL PET

2532 E. Oklahoma Ave.  
Bay View, WI 53207

**414-482-PETS (7387)**



### Store Hours

Closed Monday  
Wed: 1pm to 8pm  
Tues, Thurs, Fri: 4pm-8pm  
Saturday: 10am-6pm  
Sunday: Noon-5pm



Specializing in natural and non-toxic foods and  
treats, toys, leashes, collars, oils, vitamins, and more

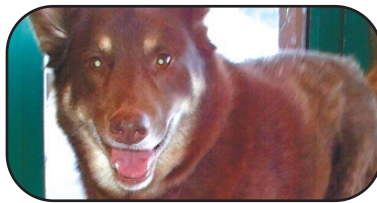
Kim  
Proprietor

# Humane Society Adoptables



**Dodge County Humane Society**  
920-386-0000 [www.dchs-wi.org](http://www.dchs-wi.org)

Ty is a young, Border collie mix. If you are looking for a playmate, I'm the boy for you. I'm an active fella and I love to play. I would make a great dog for a family who loves the great outdoors.



**Humane Animal Welfare Society**  
262-542-8851 [www.hawspets.org](http://www.hawspets.org)

Coco is a 9-year-old male Husky mix. This former stray is loving, sweet, and kid friendly, but he's not a big fan of cats. Coco is full of life - and would love to spend the rest of his life with you!



**Washington County Humane Society**  
262-677-4388  
[www.washingtoncountyhumane.org](http://www.washingtoncountyhumane.org)

Punkin is a 4-year-old spayed female. Punkin is a friendly, playful girl who is good with cats and children.



**Humane Milwaukee** 414-421-8881  
[www.humanemilwaukee.org](http://www.humanemilwaukee.org)

Bobby is a young adult medium sized, mixed breed dog. Bobby sheds minimally but does require professional grooming every few months. He is completely housebroken and highly intelligent. Bobby would do best in an active household and would excel at agility or flyball or in training as a therapy dog. He is very quick on his feet and loves to be the life of the party as well as the family comedian. His antics will best be appreciated by a tolerant, easy going but structured family.

## Silver Spring Animal Wellness Center

*"Your best friend deserves the best care... naturally."*  
*Blending traditional medicine with holistic health care*



Dr. Katherine Heinrich  
Dr. Dean Beyerinck  
Dr. Lisa Kluslow

Internal Medicine  
Complete Surgery & Dentistry  
Holistic Consultations  
Acupuncture  
Herbal & Essential Oils Therapy  
Massage Therapy & Reiki  
Spinal Manipulation  
House Call Services Available

**WE NOW HAVE SATURDAY HOURS UNTIL 3:00PM**

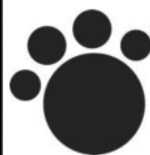
1405 W. Silver Spring Dr. | 414-228-7655 | 1/4 mile west of I-43

Over 200 dogs  
available for  
adoption on  
[www.fetchmag.com](http://www.fetchmag.com)

Click on the  
[Rescue Groups &  
Humane Societies](#)  
link.

## PORTABLE PET GROOMERS

AT YOUR SERVICE, AT YOUR HOME



**Full service grooming  
for your dog or cat  
in our van at your home**



Less  
stressful

**(877) 268-2874**

[www.portablepetgroomers.com](http://www.portablepetgroomers.com)

Super  
convenient

# Around the *Water Bowl*

## Juno's Garden® Introduces Organic Treatment Gels

Juno's Garden is revolutionizing "everyday" canine health care as we know it with its launch of organic treatment gels. These new gels help prevent infection by treating animals early. The Pal Dog Boo Boo Gel relieves pain from abrasions, cuts, burns, bug bites and stings and painful broken toenails, all common pet ailments. The unique formula contains Arnica and St. John's Wort, both known for soothing, healing and anti-bacterial qualities. It also contains Bach Rescue Remedy® flower essence blend for treating shock and calming animals in pain.

Do your companions have itchy ears? The Pal Dog Ear Wash Gel is a gentle new approach to ear cleaning and preventive care. The product is designed to dispense easily (not messy) and contains AloeVera, Witch Hazel, Geranium and Calendula oils for gentle cleaning and odor removal.

Juno's Garden products are available at these local businesses:

Bad Dog Frida Madison, WI (608) 442-6868	Animal Outfitters Fond du Lac, WI (920) 907-1232
Hounds Around Town Whitefish, WI (414) 431-8661	Metropolis Milwaukee, WI (414) 273-2504

## Announcing K-9 Izee Cream! Healthy frozen desserts for dogs!

If you're one who can't resist a double-scoop of creamy soft serve, just watch the salivating mouth of your pooch while you savor each lick. Now you can please their senses with an appropriate dessert: K-9 Izee Cream. This is a unique dog dessert that is set apart from all others in the industry and made right here in Wisconsin. In addition to pleasing the senses, K-9 Izee Cream is specially formulated for the health and gastrointestinal functioning of different sized dogs, as one size does NOT fit all. Each cup is an appropriately proportioned treat for two different size categories and is a healthy, low

fat/low cal treat that tastes great. For dogs weighing between 25-45 lbs, one bag contains (8) 1 oz. cups. For dogs weighing 46+ lbs, one bag contains (6) 2 oz. cups. Within the bags, there are two flavors: Snappy Appy and Merry Berry (ingredient information on web site).

K-9 Izee Cream is making its way onto the shelves of local pet supply stores and boutiques. If you're a retailer and would like to carry K-9 Izee Cream, please express your interest to your pet food distributor. If you're a consumer and would like your local pet food retailer to carry K-9 Izee Cream, please express your interest to the store owner.

Stella Raasch, founder, runs a private nutrition consulting practice in Green Bay, WI where she specializes in developing nutrition and care plans for dogs possessing food hypersensitivities, gastrointestinal problems, over/under weight, and skin issues. To learn more about Heavenly Blessings Consulting LLC and K-9 Izee Cream, please visit [www.heavenlyblessingsconsulting.com](http://www.heavenlyblessingsconsulting.com) or call 920-884-2822.

## Fourth Annual Easter Egg Hunt

Central Bark Doggy Day Care is pleased to host the Fourth Annual Easter Egg Hunt for dogs sponsored by Chewed for Thoughts, LLC. The event will be Saturday, April 11, 2009 from 9:00 AM - noon at 1075B W. Northbranch Drive in Oak Creek, WI. Proceeds will benefit the Milwaukee County Sheriff Department's K-9 Unit.

There will be pre and post hunt activities that will include Dog Vendors, K-9 Demos, Blessing of the Dogs, Pick-a-Fortune, Micro-chipping, Ask the Trainer and more! Photos by Peggy Morsch, voted top 5 on WISN A-list, will be on hand to take pictures of dogs in a studio setting and out on the hunt.

The hunt will feature peanut butter biscuits created by Chewed for Thoughts, LLC. Biscuits are in 3-D egg shapes for dogs to take home or eat on site. Hundreds of plastic eggs will contain prizes and treats.

Well behaved, leashed dogs are welcome to come and join in the festivities.

For further information or questions call

Central Bark Doggy Day Care-Oak Creek at (414) 571-1500 or visit our website at [www.centralbarkusa.com](http://www.centralbarkusa.com) and click on Oak Creek.

## WVRC Lends a Paw to Local Shelters

When you purchase a Pet First Aid Kit from WVRC not only can you help your own dog but other dogs as well! That's because all proceeds go to the Humane Shelter of your choice.

The Wisconsin Veterinary Referral Center (WVRC) has assembled a 37 piece Pet First Aid Kit that includes all the special items a pet might require in the event of an accident or emergency-bandages, wound care, scissors, tweezers, ointments, and a Pet Emergency Care Booklet.

Purchases can be made online at [www.wivrc.com](http://www.wivrc.com) and the cost is \$15.

Humane Shelters which can be designated as recipients of kit proceeds are as follows:

- 1) Countryside Humane Society (Racine)
- 2) Elmbrook Humane Society (Elm Grove)
- 3) HAWS (Waukesha)
- 4) Ozaukee County Humane Society (Grafton)
- 5) Washington Co. Humane Soc. (Slinger)
- 6) Watertown Humane Society
- 7) Wisconsin Humane Society (Milw.).

WVRC has been serving Wisconsin communities for over 20 years. Its main facility is a 24-hour Emergency & Specialty Care Hospital located in Waukesha at 360 Bluemound Road, where over 15,000 pets are treated annually. Its Grafton location opened in February of 2008 offering emergency/critical care, and has expanded its surgery and ultrasound/radiology services with board certified specialists. Current hours are M-F 5pm - 8am plus weekends and holidays 24 hrs, with future plans to go 24/7.

## White Paws to Host Event in Response to Sluggish Economy

The White Paws German Shepherd Rescue is pleased to announce its first annual Pet Expo. The event will take place on Saturday April 11th from 10am - 6:00pm at the Sunnyview Expo Center in Oshkosh, WI.

This one day event will feature a variety of vendors and sponsors who will share their goods through exhibits, door prizes, literature and demonstrations. Animal rescue groups from around Wisconsin will also be present and exhibiting their adoptable pets.

"In the current economy, we are experiencing a high number of animals who are being surrendered due to their family's financial situations." According to Nancy De Moulin, White Paws President. With foreclosures on the rise, many people are being forced to downsize often times into a living situation that is not compatible with owning pets, leaving these animals in the care of animal welfare organizations.

The event will feature education and entertainment with demonstrations and discussions on a variety of pet topics taking place throughout the day. More info can be found at [www.whitepawspetexpo.com](http://www.whitepawspetexpo.com).

### ...because every dog deserves to be AWESOME!

My Awesome Dog LLC is now offering dog training in Glendale, WI. Cheri Katzung and Katie Pfaff, founders of My Awesome Dog LLC, have over 10 years of combined experience working with dog owners and their canine companions. They are committed to helping other dog owners achieve the satisfaction of having a well-behaved dog and wonderful companion. Additionally, Cheri is an AKC Canine Good Citizenship (CGC) Evaluator and Katie is a member of the Association of Pet Dog Trainers (APDT). Group class offerings include: Puppy Kindergarten, Awesome Dog Fundamentals, Crash Course, Advanced Training, and AKC Canine Good Citizen (CGC) Certification.

Cheri and Katie utilize positive training methods with an emphasis on praise-based rewards, incorporating play into training, and problem solving. Training is focused on enhancing the bond between owner and pet, in addition to teaching basic obedience and offering problem-solving solutions.

Group training classes and private lessons are offered at the Dog Tired Day Care facility, located at 727 W. Glendale Avenue in Glendale, WI, just minutes from I-43 & Hampton Avenue. Prospective students are welcome to come in and observe a class; training schedules and more information can be found on their website, [www.myawesomedog.com](http://www.myawesomedog.com).

### Patricia McConnell Lecture - The Emotional Life of Animals

Join the Wisconsin Humane Society in inviting Dr. Patricia McConnell, Certified Applied Animal Behaviorist and noted author for this informative and entertaining evening lecture at the Milwaukee Public Library's Centennial Hall on Thursday, March 19, 2009 from 7:00p.m.- 8:30 p.m. Dr. McConnell has hosted "Calling all Pets" on Wisconsin Public Radio for fourteen years, providing her intuitive and expert advice to animal-loving listeners. Now, it's your turn to see Dr. McConnell in person!

Ever looked at your animal and wondered how much of her emotional life is like your own? Learn the biology behind emotion in both you and your companion animal, and why it's reasonable to believe that all mammals share the emotions of love, fear, sadness, happiness and anger. This entertaining and informative presentation includes slides and videos that illustrate what emotions really are, what emotions we share with our animals, and what ones we might not. Included is practical information about how to handle problematic emotions like fear and anger. The evening ends in a celebration of the amazing emotional bond between us and our beloved pets. The fee for this lecture is \$15. Dr. McConnell will be signing books and DVDs after the lecture.

### A Celebration of Pets Extravaganza

Country View Veterinary Service in Oregon, WI is celebrating ten years of service to our farming and pet owning neighbors by hosting "A Celebration of Pets Extravaganza." It will be on May 9th, 2009 from 9 AM until 3 PM at our clinic on the corner of S. Fish Hatchery Road and Highway CC in Oregon, WI, just minutes south of Madison. The extravaganza will include K9 agility demonstrations, sheep herding, professional pet portraits, equestrian demonstrations, seminars, tours, a petting zoo, product vendors, 4H food tents, and a stuffed animal triage unit for our youngest visitors to bring their ill or injured friends for repair. Donations will be accepted at the triage unit for our Homeless Pet Fund which provides veterinary care to stray or homeless animals. Any animal lover is welcome to attend this fun event. Visit our website for more information at [www.countryviewvets.com](http://www.countryviewvets.com) or call us at 608-835-0551.

### New Formula Soothes Away Joint Pain

Herbsmith Soothe Arthritis is a new product which recently was formulated and modified by Dr. Christine Bessent due to a need in the canine community. Herbsmith Soothe Arthritis relieves joint pain and inflammation to restore comfort and normal pain-free movement. The herbs in this formula have pain-relieving and anti-inflammatory qualities that decrease joint capsule inflammation and reduce the breakdown of joint fluid. This formula also helps glucosamine work more effectively in the older, arthritic dog.

Herbsmith Soothe Arthritis delivers therapeutic results without the negative side effects. The herbs in all Herbsmith formulas are 100% human grade and laboratory tested for purity and freedom from heavy metals and bacteria. It is sold in powder or tablet form. For more information, visit [www.herbsmithinc.com](http://www.herbsmithinc.com) or call 800.624.6429.

### A New Experience in Doggie Daycare

There is a new doggie daycare in Oak Creek that wants to change the way you think about daycares and change your dog's total daycare experience. Fido Fitness is located at 9823 S. 13th Street (inside Paws-ively Behaved K9s) and it is the first of its kind that offers one-on-one personal attention to your dog. Think of Fido Fitness as your dog's own "Personal Trainer." At Fido Fitness they know that the secret to a well-balanced dog is one that gets both physical and mental "workouts" along with play and socialization.

Fido Fitness is the brainchild of Paws-ively Behaved K9s owner and director of training, Tiffany Gutman. "Since 2003, Paws-ively has been teaching students the importance that both physical and mental exercise has on their dogs' overall well being," says Tiffany. A day at Fido Fitness is structured much like your own. There is time for work (walks, treadmill training, obedience training) and then time for play (small group socialization and playtime).

- continued on page 14

# Alaskan Malamutes: Partners in Your Life

When Vicky Meluso brought home her first Alaskan Malamute, Sasha, 25 years ago, she thought she knew dogs because she had several already. However, Sasha taught her that she did not know a thing about Malamutes. "And then I was hooked because she was so darn different from other dogs. You don't ever own a Malamute. Malamutes share their life with you. She was not a pet. She was a partner." Vicky reflects, "Every Malamute I have teaches me something new."

Today, Vicky is director of the Illinois Alaskan Malamute Rescue Association (IAMRA) and shares her home with five Malamutes ranging in age from 20 weeks to 10 years. Bev Pfeiffer, vice president of the Alaskan Malamute Club of Wisconsin (AMCW) and a breeder, shares her life with 10 Malamutes ranging in age from 13 months to 11 years. Bev said Alaskan Malamute people never have just one dog. Vicky enthuses, "They are like potato chips. You can't have just one!"

That is a lot of dog to share your home with as Alaskan Malamutes average between 75 and 85 pounds and stand about 25 inches high. Fur colors range from black, grey and red to solid white. People can confuse Malamutes with Siberian Huskies. However, the differences are many from the shape of their feet to the size of their ears. Bev explains the



biggest difference by comparing them to horses, "The Malamute is like the big sturdy draft horse that can plod around all day with the wagon while the Husky is more like the sleek thoroughbred that can go the short distance but fast."

Because Malamutes were bred to work hard all day long hauling heavy loads in arctic conditions, they need lots of exercise. Bev takes her dogs backpacking through the Kettle Moraine during Fall and Winter. Vicky has her dogs pull tires as they walk through their neighborhood. Sean Flanagan, an Alaskan Malamute owner, has had his dogs pull him on his skateboard. Sean says, "It is very apparent that this breed is bred to pull. As soon as they see the pulling harness, their whole demeanor changes."

Backpacking, sledding and weight pulling are some of the other activities that people and their Malamutes participate in. Some even win titles through the national organization, the Alaskan Malamute Club of America. Vicky says that you do not want a bored Malamute because "You could be gone for a lunch hour, come home, and find a hole dug in your backyard that is big enough to bury your car." And Bev cau-

tions, "Summertime needs to be the least active. You have to be cautious to not overheat them."

Besides the need for a lot of exercise, potential owners should be aware of other aspects of having a Malamute. These include stubbornness, their escape artist ability and, don't forget, the hair. Vicky talks about their stubbornness, "They are not a dog for the faint of heart. As wonderful as they are, they can be pushy. They are very independent and intelligent. They don't like repetitious training. They think 'I sat once. Why should I do it again? If you didn't see it, then you are the dumb human.'"

Because of their love of running, Malamutes can be escape artists. Vicky affectionately calls her home "Malcatraz". She has very high fences that are buried underground. Malamutes will not only dig under a fence to get out but also climb over them.



And, then there is the hair. "If people do not want to vacuum daily, a malamute is not the dog you want in your house" confirms Bev. Sean illustrates, "Malamutes are a double coated breed and continually shed their undercoat throughout the year. The outer coat (guard hairs) shed gradually throughout the year as well. On top of this, twice a year they 'blow coat'. This is a period when they shed most of their undercoat over the course of two weeks."

Few of these difficulties are thought of in the presence of an Alaskan Malamute





puppy. Vicky says, "There is nothing cuter on the planet than a Malamute puppy. A Malamute puppy will melt your heart. They are little adorable fuzzballs that look like stuffed animals. You want to cuddle them. You cannot see one and not fall in love." Unfortunately, due to the work that Illinois Alaskan Malamute Rescue Association (IAMRA) does, Vicky knows what happens next and explains, "A few months later people ask themselves what they have gotten themselves into."

IAMRA was founded in 1989 by Nancy Biglow who was the director until she retired in 1999 and Vicky took over. IAMRA is based in Illinois but also does place in Iowa, Ohio, lower Michigan and

lower Wisconsin. Vicky says they like their dogs to be located where they can assist or get to them if needed. Since 1989, 600 dogs have been placed by IAMRA with 75 dogs being placed during an average year. Working with that many dogs requires a lot of volunteers. They have about 200 helpers that stay in touch with roughly two dozen hard core volunteers.

IAMRA's adoption process is thorough, as reputable rescues need to be. The process includes the prospective owner filling out an application, a phone screening and home visit before even meeting any dogs available for adoption. Since IAMRA wants this to be a dog's forever home, Vicky says, "We tell them the whole truth - the good, the bad and the ugly. Then, we let them think about it. The most important part is matching an individual dog to people's lifestyle needs and wants. We are like eHarmony for dogs!"

Vicky sums up the love that people have for the Alaskan Malamutes in their lives, "The best thing about Malamutes is that they are smart. The worst thing about

Malamutes is that they are smart. That is what is going to catch you. It is why you pull your hair out and ask yourself why you ever got this dog and it is why you love them."

#### Websites

Alaskan Malamute Club of Wisconsin  
[www.amcw.org](http://www.amcw.org)  
 IL Alaskan Malamute Rescue Assoc.  
[www.iamra.org](http://www.iamra.org)  
 Alaskan Malamute Club of America  
[www.alaskanmalamute.org](http://www.alaskanmalamute.org)

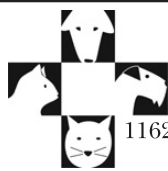
**Marie Tubbin** loves spending time with her two best buddies, her husband, Mike and her dog, Louie. She met Mike at Burger King and Louie at HAWS and considers those two of the luckiest days of her life.

### Dog Park Guides

(Listing of dog parks in Metro Milwaukee, Dane County, & Racine/Kenosha Counties.)

Now Online at:

[www.fetchmag.com](http://www.fetchmag.com)



## East Towne Veterinary Clinic

11622 N Port Washington Rd (½ mi N of Mequon Rd)  
 262.241.4884 • [vetcor.com/mequon](http://vetcor.com/mequon)

**Drs. Tunder, Gilbertson & Kasum**

Exams & Vaccinations  
 Surgery, Dentistry & Oral Surgery  
 Located ½ Mile N of Mequon Rd  
 New Patients Always Welcome!

**Call for an appointment today!**



**Dan & Sandy Sykora**

Insured & Bonded

414.486.1891

**Pet Sitting & Daily Walks**

[www.myawesomedog.com](http://www.myawesomedog.com)

Positive training with an emphasis on praise-based rewards, incorporating play into training, & problem solving. **Come observe a class today!**



**Class location:** DOG TIRED DAY CARE  
 Glendale, WI  
[www.dogtiredogs.com](http://www.dogtiredogs.com)

GROUP LESSONS, PRIVATE TRAINING, &  
 AKC CANINE GOOD CITIZEN CERTIFICATION

to register, call: (414) 967-5857

## FIDO FITNESS

"Not Your Ordinary Doggie Daycare"

Personal One-on-One Attention  
 Structured Exercise (walks, jogs and Obedience)  
 Workouts for Body and Mind  
 Small Group Playtime  
 Limited Space per day

LOCATED IN OAK CREEK  
 (262) 880-9046  
[www.pawsitivelyk9s.com](http://www.pawsitivelyk9s.com)



*continued from page 11*

Fido Fitness understands that it is usually the dogs who are not a candidate for doggie daycare that need the service the most. Because of the limited number of dogs Fido Fitness takes in per day, they can give even the most challenging dogs a good workout and slowly work on supervised socialization over a period of time.

Fido Fitness is currently accepting reservations for Mondays and Fridays. If you would like more information, please feel free to contact us at (262) 880-9046. You can also find us online at [www.pawsitivlyk9s.com](http://www.pawsitivlyk9s.com).

### Training Not Working?... Think Pawsitive

Katie Oilschlager, owner of Think Pawsitive, is happy to announce the grand opening of her new training facility in Oconomowoc. Katie has over 13 years of experience in training dogs and is a member of The Association of Pet Dog Trainers, an evaluator for AKC/CGC, and President of the Wisconsin Groomers Association. Think Pawsitive offers puppy, adult, and numerous agility classes along with private lessons. The style of training focuses on positive reinforcement and lateral thinking to train any behavior, from teaching puppies crate training to competitive agility lessons.

Other activities available at Think Pawsitive include a 32'x16'x4' pool heated at 86 degrees. You can schedule sessions for your pooch to rehab after an injury, condition for K9 sports, or just fun time. After a swim session, your pooch can enjoy a soothing mas-

sage by Tranquil Paws Canine Massage, 920-378-3540 or receive a grooming session from Danielle at Shaggy Chic Pet Salon, 941-705-2279. Then it's off to training class or a walk through the retail section in search of the next squeaky toy. Think Pawsitive offers so many things for you and your best friend.

Find more information and schedules for training sessions at [www.thinkpawsitivedog.com](http://www.thinkpawsitivedog.com).

### Wellness Pet Expo Coming in April

Southeastern Wisconsin's 6th Annual Pet Wellness Expo will once again be held at the Burlington High School. April is National 'Animal Cruelty Prevention' Month and by holding an animal wellness expo in April we are supporting the efforts of this national campaign.

The purpose of the Pet Wellness Expo is to bring all walks of animal care professionals together in one place for the general public. While at the event, you will be able to talk to these professionals, first hand. Exhibitors include many animal rescue organizations, dog trainers, boarding or pet sitting services, pet stores, grooming/dental care options, veterinary clinics, animal shelters, pet food representatives, dog bakeries, doggy day care services, and veterinary holistic health care providers. Be sure to bring a photo of your pet if you plan to visit the animal communicator's booth.

The first 100 people through the doors will receive a FREE goodie bag. This loaded down bag will be filled with coupons, brochures and free samples! So be sure to get there early. Admission is \$2 and parking is FREE! Food is available on site, so bring the family for the day. Since we will have so many performing animals at the event, please leave your pet at home.

If you are interested in being a vendor or a sponsor for this event, contact us at 262-767-9392. For more information including the seminar and demonstration schedules, visit our website: [www.PetWellnessExpo.com](http://www.PetWellnessExpo.com)

### Insurance Tips for Dog Owners

With all of the negative press Rottweilers and Pit Bulls receive, and now with many municipalities putting restrictions on owning these specific dog breeds, it has become even more important to make sure that your dog's actions are covered under your Homeowners or Renters insurance policy.

Statistically it is very unlikely that your dog will ever bite or injure someone, but in the event that they do, make sure that you are covered. Many insurance companies will deny coverage if you own certain breeds of dogs, such as a Rottweilers or Pit Bulls. Dog owners are often unaware of this and may not find out they don't have coverage until an incident has already happened.

The only way to make sure you are covered is to call your agent. Let them know exactly what kind of dog you have and ask them if the insurance company would cover a liability claim involving your dog.

If you are having insurance problems because of your dog, please give us a call. McCabe Group Insurance Services is a local insurance agency that works with dog owners and can offer coverage regardless of breed, including Rottweilers and Pit Bulls.

For more information, call McCabe Group Insurance Services at 866-961-1166 or visit us online at [www.mccabegroupins.com](http://www.mccabegroupins.com).

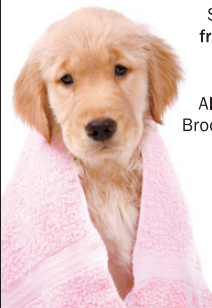
**Veterinary Spinal Manipulation Therapy**  
(comparable to Chiropractic)  
**Comprehensive Dental Care**  
**Canine Reproduction, C-sections & Neonatal Care**  
**Indoor Parking**



**Veterinary Village LLC**  
N11591 Columbia Drive | Lomira WI  
[www.veterinaryvillage.com](http://www.veterinaryvillage.com)  
920-269-4072 | [vv@k9stork.com](mailto:vv@k9stork.com)

Mon. & Thurs. 7:00am - 8:00pm | Tues., Wed. & Fri. 7:00 am - 6:00 pm | Sat. (most) 7:00am - 12:00pm | Closed Sun.

### PAMPER YOUR POOCH & SUPPORT EBHS



Support EBHS by washing your dog on **Sunday, April 26th** from **11 am - 3 pm** at the Petlicious Dog Bakery Pet Spa & Self-Service Dog Wash.

All proceeds from dogs washed at the event will go to Elm Brook Humane Society. Dog washes \$15. Shampoo, towels, blow dryer and other grooming supplies will be provided. Groomers will be available to do nail clipping.

**Petlicious Dog Bakery is located at**  
**2217 Silvernail Road in Pewaukee.**  
**ph: 262-548-0923**

## The Obsession with Dog Clothes; **Is it ok to run around naked?**

Unless you have an African Ridgeback who needs protection in our cold Wisconsin winters, why would you want to dress your dog? Probably for the fun of it. Or because you can—it's getting easier and easier to find chic apparel for dogs.

Cherry mink coat anyone?

Brewcitytails.com, an online community for Milwaukee area pet lovers, conducted a survey back in October: "Do you dress your pet(s) in clothes or Halloween costumes?" Here's what they found:

"Yes, it's great fun and my pet loves it!" - 27.3%  
 "My pet wears a sweater to protect them from the cold." ----- 27.3%  
 "No way! Pets aren't people and don't wear clothes!" ----- 27.3%  
 "Eh, I've done it occasionally, but it's not that great." ----- 18.2%

The results found weren't much different from that of a national poll conducted on About.com, which asked a similar question: "Does your pet wear clothes?" The results were:

"Yes, because jackets are needed for my pet/climate" ----- 25%  
 "My pet wears life jackets while swimming or boating" ----- 9%  
 "Yes, mainly because I think they look cute" ----- 8%  
 "Yes, but only on holidays or special occasions" ----- 17%  
 "No way!" ----- 31%

Maybe folks aren't aware of the online fashion choices for dogs, such as Born to Ride Motorcycle Harness/Jacket, \$49.95 at moderntails.com; or cashmere sweater, \$128 at jcrew.com (Crewmutts dog line); or the Garden Party Swarovski Dress, \$3,000, at gwlittle.com. (Yes, that's three thousand dollars!) In addition to their cherry mink coat, Moderntails.com features a wide selection of swimwear for dogs including, believe it or not, bikinis!

Considering the cost of dog food, treats, and vet bills, perhaps we don't have the money for these "luxury" items, especially in this sorry economy. Or maybe it's just that we're more practical here in the Midwest and dress our dogs for one reason

only-protection. Ideally it's also because those of us with dogs who clearly hate to get dressed choose to respect their desire to run naked. I decided to check this out with some of our local, privately owned pet stores.

Third Ward's Metropawlis owner Geri Ray carries sweaters, hoodies, and winter coats for Milwaukee's cold and wet winter weather. "Actually that's the only time we carry clothing," says Ray. Dog owners in this area don't seem to really get into doggy fashion. "Honestly, we just don't get requests for the frilly dresses or the doggy swimsuits." Especially in today's economy, she says dog clothes need to be "practical, durable, serve a purpose, and yet have somewhat of a fashion edge to them."

Carrying sizes from toy to medium with a few large dog items, Ray's selection includes red silky holiday coats; winter jackets with waterproof shells and polyfleece linings; and eco-friendly sweaters made from recycled natural fabrics. The lines she chooses mimic human fashion, and with the slower economy, Ray says more neutral colors are in. As we find ourselves choosing less bling, fewer pinks, and more grey, tan, and green, we'll notice the dashing dogs sporting the same.

Online surveys indicate that some folks are absolutely opposed to the idea of dressing dogs. When a dog obviously dislikes the idea, Ray thinks it's unfair to dress him up, but she also notes that small dogs seem to like the idea and in those cases she sees nothing wrong with it. However, she personally discourages the trend toward dressing up cats. "They're now launching lines of cat clothes, which we will not be carrying." She explains that grooming is an essential, emotional activity for cats. "In addition to cleaning their fur, they need to be able to groom themselves for emotional well-being. It's comfort for them, and if they cannot get at themselves to do that, it's really going against nature."

Carrie Marble, owner of Bark 'n Scratch, says "I'm basically convenience and practicality." She carries goggles for animals with eye conditions (such as sun sensitivity), and for stylin' on ski trips or riding Harleys with their owners. Goggles also provide safety for dogs that travel in cars with their heads hanging out the window. "And they look really cute!" Marble adds. She also carries

- continued on page 37



## The Elegant Pet

P O Box 71338  
Shorewood, WI 53211  
414-750-4700  
info@theelegantpet.net  
www.theelegantpet.net



All Services Include  
Bathing, Professional styling, Pedicure  
Otic Cleansing, Bandana and  
Conditioner with sun screen

Mobile Pet Grooming at it's Best Serving the Metro-Milwaukee Area

Grooming done in our  
State of the Art Eco-friendly  
Inverter based Mobile Salon  
No Generator Noise or  
Noxious Fumes





Ask about our VIP Program

Calling all Labs, Pointers, Bulldogs and other short-haired breeds Call us to inquire about **FURLESS FRIDAY SPECIALS** 414-750-4700

# CranioSacral Therapy for Animals

Creaking hips, aching joints, back pain, inflammation; we've all experienced it at one time or another. Many times we take some ibuprofen, see the doctor, or ignore it and hope it goes away. But what if you are a dog with these symptoms? How can we, as human companions, help our pets ease the pain? Take them to a specialist, such as a CranioSacral Therapist, to ease their discomfort and help them feel young and carefree once again. CranioSacral what? Let me explain.

CranioSacral Therapy releases restrictions in the connective tissue found throughout the body; it supports every organ, wraps around muscles, forms tendons and ligaments and holds the cerebral spinal fluid around the brain and spinal cord. When the body is injured, the connective tissue tightens up to provide more support and prevent further damage. This is called splinting. If the connective tissue remains splinted instead of relaxing back to normal after it is healed, it can create areas of strain in the body. This causes many problems including, but not limited to: reduced range of motion; shortened muscles, ligaments or tendons; pinched nerves; reduced blood and lymph flow; and pain.

CranioSacral practitioners are trained to palpate these areas of restriction in the body. Gentle and precise techniques help the body restore the tissue to normal. People and animals find receiving CranioSacral Therapy to be deeply relaxing. It causes a release of endorphins which optimizes the immune system - helping with general health and well-being. It also helps resolve pain and discomfort due to aging, allergies, injury, arthritis or post-surgical recovery.

CranioSacral Therapist Dawn Papke has been practicing in the Schenk-Atwood Neighborhood of Madison since 1994. In her office - located at 2044 Atwood Avenue - she sees pets and humans. Animal CranioSacral Therapy sessions are \$35 and last about thirty minutes. Some of the reasons pet owners bring their animals to see Dawn are digestive difficulties, weakness, fatigue, and for general balancing. Many of the animals are older and owners report that their pets act more perky and youthful after having CranioSacral Therapy (CST).

Pets are brought to a CranioSacral therapist who works with them either on a massage table or on the floor, depending on the animal's size and where they will be most comfortable. CranioSacral Therapy involves placing the practitioner's hands on the dog and feeling the craniosacral

rhythm. This gives her information about where on the animal's body requires attention. Treatment involves leaving the hands on the pet and making small movements that free up tension patterns in the connective tissue. A practitioner's hands may stay in one spot for anywhere from two to five minutes, depending on how many restrictions that area needs to release. Then the hands are moved to the next area, determined by the tension patterns in the pet's body.

Animals get relaxed and mellow during the treatment. They often seem to understand what the practitioner is doing and will help out by facing the part of their body that they feel needs work toward her. Dawn enjoys working with all animals and especially loves how after a session they do this deep gazing into her eyes -- saying "thank you".

Occasionally, Dawn works on animals in their homes, especially if she is also working on other pets at the same visit. A house call may also be needed if a pet is too ill to go out. CranioSacral Therapy can help make a pet that has a terminal illness more comfortable.

## How CranioSacral Therapy is different than animal massage

CST is different from regular animal massage because it involves holding in



Since 1929

**MILWAUKEE DOG TRAINING CLUB**

ALL DOGS WELCOME

Obedience | Household Training  
Agility | Fly Ball | Scent Hurdle  
Puppy Classes

414.961.6163

LOCATIONS: 4275 North Humboldt  
25th & St. Paul

MAIL TO: P.O. Box 763 Milwaukee, WI 53201

[www.milwaukeeadog.com](http://www.milwaukeeadog.com)

www.fetchmag.com

16

Spring 09

## COMPANION'S REST

### PET CEMETERY



Remembering those who brightened our lives with unconditional love.

Companion's Rest Pet Cemeteries are located within natural areas designed to provide your "special" family member with the dignity and perpetual care they deserve. A large variety of memorial options, including natural burial and cremation arrangements plus urns, caskets, and memorials are available.

Preplanning is available, or we are there to assist when you need us most.

**COMPANION'S REST** at

Arlington Park, Greenfield 414-282-6600	Forest Hill, Oak Creek 414-762-4446	Sunset Ridge, Kenosha 262-652-7488
--	--	---------------------------------------

one spot for a longer amount of time and the movements are smaller and more intricate than massage. Because CST releases tension in the connective tissue it can also work more deeply in the body than massage can reach -- for example, working on the connective tissue that goes around organs such as the stomach or liver. The effects of CST can also be more global than those of massage. To stay with our example, if a tension pattern in the tissue around the stomach and liver is released, it can cause not only more efficient digestion, but more freedom of movement through the back (because those organs attach to the inside of the back).

Dawn is happy to answer questions or schedule appointments at (608) 438-6649. Her website is [www.amazingtherapy.com](http://www.amazingtherapy.com).

Sara Blackthorne is a freelance writer and editor living in the Madison area with her partner and two giant Siamese cats - and petting every dog in the neighborhood. She can be reached at [s.blackthorne@gmail.com](mailto:s.blackthorne@gmail.com).

**Dane County Humane Society**  
[www.giveshelter.org](http://www.giveshelter.org)



... where Dane County's  
most eligible  
singles hang out!



Visit us today at:  
5132 Voges Road  
Madison, WI 53718  
(608) 838-0413



## A cushy place for your canine companion.

### Apartment Suites

Fiesta Area: For younger, social dogs  
Siesta Area: For mature, low activity dogs  
Family Suite: For multiple dog households

### Doggy Day Care

Play groups based on size & temperament  
Plenty of canine and human interaction

### ALSO FEATURING



Aqua Paws is an underwater treadmill for dogs of all sizes.

Low impact  
Adjustable water level  
Adjustable speed  
Safe, Clean Environment



**canine campus**  
et resort  
...A VERY SPECIAL PLACE FOR YOUR BEST FRIEND

38322 Delafield Rd.  
Oconomowoc  
phone: (262) 244-7549  
[www.canine-campus.com](http://www.canine-campus.com)



### Camp List

Dog treats ☒  
Leash ☒  
Bowl ☒  
My Stuff ☒

The ultimutt camping adventure  
for outward hounds and their people.

Camp dates:  
August 21-24, 2009 and August 28-31, 2009  
Register now! 🐾 [www.dogcamp.com](http://www.dogcamp.com)

# Going to the Dogs: Pet Friendly Vacations in Wisconsin

Imagine this: You and your dog having lunch at an outdoor café on a sunny day in Madison, Wisconsin. Or, imagine you and your dog playing in the cool water on the shores of Lake Michigan in Door County. How about the two of you wandering through a championship disc golf course nestled in a quiet valley in Sparta near La Crosse? All of these scenarios are possible due to the variety of pet friendly lodging available in Wisconsin.

With fluctuating gas prices and the shaky economy, now is the time to plan a vacation closer to home and see the sights of Wisconsin. And, why not take your dog along, too? Denise Barnett, vice president of marketing and operations of the Wisconsin Innkeepers Association, which represents all types of lodging from single vacation homes to water-parks and hotels, says that they are seeing an increase of folks traveling with dogs. The Wisconsin Innkeepers Association website ([www.wisconsinlodging.info](http://www.wisconsinlodging.info)) even allows you to search for a place to stay with "pets with prior approval" being part of the criteria. About 40% of the Association's facilities accept pets.

Denise says there are locations to suit every taste, whether "you want

to stay in an urban setting and go shopping...or go some place where your dog can run free on the beach and swim in the lake."

Stewart Inn in Wausau, Wisconsin has welcomed over 150 dogs to its bed and breakfast. Jane Walter, who owns the Stewart Inn along with her husband Paul, puts a milkbone on the pillow for the dogs instead of the typical chocolate for the humans. There is also a bottomless biscuit jar on the front desk that their 13 year old dog Chester sits by, hoping for guests to wander in his direction.

Jane and Paul moved to Wisconsin from California, where one of their favorite places allowed pets, and decided to open be a pet friendly establishment here too. Three out of the five rooms at the Stewart Inn allow canine guests.

"99.9% of the animals are good. While the guests have wine and cheese, the dogs all hang out together in the living room," says Jane. Out of all the dogs that have visited the inn, only one younger canine guest was asked to gain a bit more training to control his barking and chewing before he returned again.

Don't think that a pet friendly place is less well-kept as other lodging. Jane says she has had at least two guests drive by the inn thinking they had the wrong address because "such a nice place couldn't possibly allow dogs". The Stewart Inn is a Select Registry Inn meaning that it is one of only 400 in the country and must pass a rigorous inspection to maintain that title.

For those travelers who want to experience Madison with their dog, the Edgewater



Photo courtesy of Stephanie Bartz Photography, copyright 2009.

Hotel is a family-owned, upscale hotel. It is less than 15 minutes away from many attractions, including the Capitol and the Alliant Energy Center. Canine celebrity guests have included George Carlin's dog, two Totos from the Wizard of Oz and some Madison area opera singers' four legged friends. Judy Alberts, marketing director, said the Edgewater Hotel staff will greet you at check-in with a "pooch pack welcome gift bag" containing little treats. Judy said the Edgewater is within walking distance of State Street where you can sit at outdoor cafes in the summer and have your dog with you. If you want to do some quick shopping, Judy has even been known to occasionally dogsit in her office and actually loves to do so.

Now, if llamas, a pygmy goat, disc golf or skijoring are what you are looking for in your Wisconsin vacation, Justin Trails Resort in Sparta, Wisconsin is waiting to greet you and your canine friends. Pets are allowed in every lodging choice, including two log cabins, three suites, and a cottage, some of which have whirlpools and fireplaces. In 2009, 15 primitive camping sites will be offered for the first time.

According to Donna Justin, who along with her husband, Don, owns Justin Trails, "the goat and llamas have adjusted to the dogs. Some younger dogs want to bark at the llamas. They just look at the dog and quietly seem to think, 'oh, so you are a noisy one'."

There are many activities on their 200 acres which make for happy guests and happy dogs. During winter, Donna and her husband will show interested dog owners how to skijor with their dog. They have harnesses for dogs between 45 and 70 pounds. One dog owner puts skis and a harness on himself or herself and the



dog's other parent stands out front with treats to lure the dog. Donna says, "It usually only takes one trip around the loop for the dog to figure out how much fun this can be."

For guests and dogs alike, Justin Trails Resort is home to two disc golf courses which are open year round. One is a mile long and the other is a 3 and 1/2 mile championship course.

These are just a few of the places that welcome travelers who bring their four footed friends. Please keep in mind that not every dog is suited for traveling. Even though she works for the Wisconsin Innkeepers Association, Denise Barnett's own dog, Tanner, did not want to leave her side when she attempted traveling with him. Denise says it was not a relaxing vacation for either her or Tanner.

There are also some guidelines for traveling with your dog. You should not expect to be able to leave your dog unattended in your room although some places do allow that. Check with your lodging choice to see what they permit. According to Denise, "it can be very stressful for your dog to be in that situation with strange sounds and smells. Your dog may get lonely and cry and bark."

Some destinations charge extra for your canine guest. This primarily is because floors, carpeting and furniture must all be cleaned and scrubbed. As Denise states, "There are some people who are allergic to dogs. The property owners have a strong need to make sure that anybody coming into that room can enjoy it."

With common sense, a bit of research on your lodging options and a sense of adventure, your Wisconsin "stay-cation" will provide fun memories for you and your four-legged best friend. As Denise states, "We truly believe that if you are taking your dog on vacation that it is your dog's vacation as well!" And the owners of pet-friendly lodgings will do everything they can to help both of you enjoy your stay.

**For more information:**  
Wisconsin Innkeepers Association  
[www.wisconsinlodging.info](http://www.wisconsinlodging.info)

**Marie Tubbin** loves spending time with her two best buddies, her husband, Mike and her dog, Louie. She met Mike at Burger King and Louie at HAWS and considers those two of the luckiest days of her life.

## Buy One Day - Get One Free Dog Day Care or Boarding\*

### Top Ten Reasons for Doggy Day Care...

10. So your dog plays well with others
9. To curb destructive behavior
8. Can you hold it for 10 hours?
7. You can stay at Happy Hour longer
6. You love your best friend
5. Your dog will be fully exercised

### ...and the top 4 reasons

4. Half eaten couch = \$500
3. Carpet cleaning = \$200
2. Chewed up shoes = \$50

### 1. Lucky Dog! Dog Day Care... Priceless!!

\*Applies to new customers only.

5700 sq. ft.  
Treats | Beds | Toys  
Dogs Always Monitored  
Come On Your Way to Work  
Fully Insured  
6:00am - 6:00pm

**Lucky Dog! Dog Day Care & Boarding**  
828 Perkins Drive | Mukwonago  
[www.LuckyDogDogDayCare.com](http://www.LuckyDogDogDayCare.com)  
262-363-5951



## CRATES ARE FOR



## LEG LAMPS

### Does Your Dog Daycare & Boarding Facility Offer:

- Crate-Free Care?
- 24-Hr Onsite Supervision?
- LIVE Webcam Access?



727 W. Glendale Ave.  
Glendale, WI 53209  
[www.DogTiredDogs.com](http://www.DogTiredDogs.com)  
(414) 967-5857

### NEW LOCATION!

We are now part of  
Puppy Playground in  
Oak Creek

**Sirius**  
Companion Dog Training, LTD.

## Dog & Puppy Training Classes

**Patient...**and rewarding!  
**Positive...**training with positive results!  
**Professional...**25 years experience!  
AKC APDT Certified

Classes available in:  
**Puppy Kindergarten** **Canine Good Citizen**  
**Beginning and Advanced Manners** **Rally O**  
**Group and Private Lessons** - On Site or at Home

414.698.3223



# Metro Milwaukee Canine Marketplace



## BLADE SHARPENING

Eagle Point Sharpening 262-673-7976  
Shears & Blade Sharpening  
Neu N Sharp 414-353-8213  
Factory edge sharpening for pet groomers.



## BOARDING & KENNELS

### 7 Mile Pet Boarding and Grooming

262-835-4005  
1811 W. 7 Mile Rd. Franksville  
www.7milepets.com 7milekennels@sbcglobal.net

**Animal Motel** 262-781-5200  
13175 W. Silver Spring Rd. Butler  
www.animalmotel.net animalmotel@aol.com

Canine Campus Pet Resort 262-244-7549  
38322 Delafield Road Oconomowoc

**Just Like Home Doggie Motel** 414-640-0885  
W8264 Cty Hwy J Watertown  
justlikehomedm@aol.com

Sullivan Veterinary Service 262-593-8021  
103 Main St. Sullivan



## DENTISTRY SPECIALISTS

**Animal Dental Center** 888-598-6684  
2409 Omro Rd., Oshkosh 920-233-8409  
2100 Silver Spring Rd., Glendale 414-540-6710  
www.mypetsdentist.com dale@vin.com

The Animal Dental Center of Milwaukee and Oshkosh is a veterinary specialty practice devoted to you, your pets and your primary care vet. Providing dental and oral surgical services for companion animals throughout Wisconsin. For more info, visit www.mypetsdentist.com.

## Veterinary Dental Specialists

Dale Kressin, DVM, FAVD, DAVDC  
Oral Surgery & Dentistry



## DOG CAMPS

**Camp Dogwood** 312-458-9549  
www.campdogwood.com  
Spring Camp May 22-25!

### Dog Days of Wisconsin Dog Camp

1-800-Camp-4-Dogs www.dogcamp.com  
summercamp@dogcamp.com

Camp dates in '09 August 21-24 & August 28-31.



## DOG TRAINING

### 4 My Dogz - Professional Pet Training

262-820-0763  
N60 W22849 Silver Spring Dr. Sussex  
www.4mydogz.com info@4mydogz.com

**Animal Motel** 262-781-5200  
13175 W. Silver Spring Rd. Butler  
www.animalmotel.net animalmotel@aol.com

**Best Paw Forward Dog Training** 262-369-3935  
Hartland & Pewaukee Locations  
www.bestpawforward.net info@bestpawforward.net

**Cudahy Kennel Club** 414-769-0758  
3820 S. Pennsylvania Ave. Saint Francis  
www.cudahykennelclub.org

Only \$85 for new training class or only \$65 for continuing classes. Obedience, Agility, Conformation, Puppy Kindergarten, and Manners Training

**Dawgs in Motion** 262-268-8000  
580 N. Dekora Woods Blvd. Saukville  
www.dawgsinmotion.com, admin@dawgsinmotion.com

Dog's Best Friend Premier Dog Training 414-476-5511  
5932 W. Mitchell St. West Allis

**For Pet's Sake** 1-888-581-9070  
828 Perkins Dr. #200 Mukwonago  
www.forpetsake.cc patti@forpetsake.cc

Hound Handlers, LLC 262-894-0235  
www.houndhandlers.com West Bend/Kewaskum

Milwaukee Dog Training Club 414-961-6361  
4275 North Humboldt Milwaukee

**My Awesome Dog LLC** 414-690-0304  
727 W. Glendale Ave. Glendale  
www.myawesomedog.com, info@myawesomedog.com

**Paws-itivity Behaved K9s** 262-488-1982  
9823 S. 13th St. Oak Creek  
www.pawsitivityk9s.com tgutman@wi.rr.com

Rock's Positive K-9 Training 262-662-4160  
Specializing in Behavior Problems

Sirius Companion Dog Training 414-698-3223  
Classes held at Puppy Playground in Oak Creek.

Take the Lead 414-916-2851  
528 S. 108th St. West Allis

**The Teacher's Pet Dog Training** 414-282-7534  
www.theteacherspetdog-training.com

**Think Pawsitive Dog Training** 262-893-9540  
www.thinkpawsitivedog.com  
info@thinkpawsitivedog.com

**Wisconsin Humane Society** 414-ANIMALS  
4500 W. Wisconsin Ave. Milwaukee  
www.wihumane.org



## DOGGY DAY CARE

### Central Bark Doggy Day Care

Locations throughout south & southeast Wisconsin.  
www.centralbarkusa.com

Franklin 414-421-9003  
9550 S. 60th St. Franklin

Jackson 262-677-4100  
3767 Scenic Rd., Suite. F Slinger

Lake Country 262-966-7637  
N77W31144 Hartman Ct., Unit K-9 Hartland

Mequon 262-512-WOOF (9663)  
11035 N. Industrial Dr. Mequon

Muskego 262-679-2400  
S81 W18460 Gemini Dr. Muskego

Milwaukee Downtown 414-347-9612  
420 S. 1st St. Milwaukee

Milwaukee Northside 414-353-9991  
5780 W. Hemlock St. Milwaukee

Menomonee Valley 414-933-4787  
333 North 25th St. Milwaukee

New Berlin 262-785-0444  
2105 S. 170th St. New Berlin

Oak Creek 414-571-1500  
1075 W. Northbranch Dr. Oak Creek

Sussex 262-246-8100  
W227 N6193 Sussex Rd. Sussex

Waukesha Harmony 262-446-CARE (2273)  
1208 Dolphin Ct. Waukesha

Wauwatosa 414-771-7200  
6442 W. River Parkway Wauwatosa

## Free Behavior Assessment

(with first day of day care)

Offer good at all area locations.

For a location near you, visit  
www.centralbarkusa.com

**\$20 Savings**



Come Sit Stay Play Dog-u-cation Center 414-234-0799  
4224 W. Lincoln Ave. West Milwaukee

Cozy Lodge Doggie Day Care, LLC 262-334-8193  
1410 Lang St. West Bend

**Dog Tired Day Care** 414-967-5857  
727 W. Glendale Ave. Milwaukee  
www.dogtiredogs.com info@dogtiredogs.com

Doggy Office Doggy Daycare 262-783-PAWS  
3515 N 127th St. Brookfield

**Fido Fitness** 262-880-9046  
9823 South 13th Street Oak Creek  
www.pawsitivityk9s.com deeppawsitive@aol.com

Logans Pet Grooming & Daycare 262-673-3330  
2962 State Road 83. Hartford

**Lucky Dog! Dog Day Care** 262-363-5951  
828 Perkins Dr., Su. 300 Mukwonago  
www.luckydogdogdaycare.com  
annette@luckydogdogdaycare.com

North Shore Doggy Daycare LLC 414-352-2273  
1980 W. Florist Ave. Milwaukee

Pooch Playhouse 262-646-PLAY  
24 Enterprise Road Delafield

**Puppy Playground** 414-764-7877  
8411 South Liberty Lane Oak Creek  
www.puppyplaygroundwi.com  
info@puppyplaygroundwi.com



## EXERCISE & REHAB

**Animal Doctor** 414-422-1300  
S73 W16790 Janesville Rd. Muskego  
www.animaldoctormuskego.com

Animal Dr. has a full-service canine rehab facility offering an underwater treadmill with jets, therapeutic ultrasound, electric stimulation, cold laser and therapeutic exercises. We also offer spinal manipulative therapy, acupuncture, custom orthotic braces, weight loss and conditioning programs, and nutritional and herbal consults.

Canine Campus Pet Resort 262-244-7549  
38322 Delafield Road Oconomowoc



## FOOD & TREATS

**Chewed for Thoughts** 414-303-8839  
www.chewedforthoughts.com  
info@chewedforthoughts.com

Unique, edible biscuit cards with jingles and poems for different occasions.

The Doggy Bag 262-560-1717  
150 E. Wisconsin Ave. Oconomowoc

## Doodles' Original Organic Canine Wonder Burgers!

Sold only by order in Milwaukee. Virginia: 414-289-9730  
Organic chicken or salmon with SBGA Plus! Sold in frozen packs of 31. (Trial order discount available.)  
"One a day - For health and play!" (Kitty Bits Too!)

**Heavenly Blessings Consulting, LLC**  
920-884-2822  
Stella J. Raasch, B.S., Dip. ACNS ~ Canine Nutrition Specialist  
www.heavenlyblessingsconsulting.com

K-Nine Barber Shop 262-786-7550  
15970 W. National Ave. New Berlin

**The Natural Pet** 414-482-PETS  
2532 E. Oklahoma Ave. Bay View  
www.thenaturalpetllc.com thenaturalpet@wi.rr.com

Specializing in natural and non-toxic foods and treats, toys, leashes, collars, oils, vitamins, and more.

**\$2.00 OFF**  
your total purchase of  
**\$20.00 or more**

Sullivan Veterinary Service 262-593-8021  
103 Main St. Sullivan

**Animal Fairy Charities**  
www.animalfairycharities.org  
info@animalfairycharities.org  
Fostering national & international prevention of cruelty to all animals and aiding in their safety & welfare.



## GIFTS/APPAREL/MEMORABLES

**Doggie Dreams** 414-964-5413  
www.elegantcello.com

"Doggie Dreams" is a proven pet-soothing cd for your dog or human music lover. Cellist Jane Hollander has performed for dogs for decades with remarkable effects. Now she is sharing her music, her stories, and a light commentary on the dreamy classics she performs. Selections include tangos, familiar arias, Pachelbel Canon, and other musical delights from the classical repertoire. CD's available at cdbaby.com, Schwartz Books, Amazon.com, elegantcello.com or at 414-964-5413.

*Doggie Dreams*

pet-soothing cd for  
your dog or human  
music lover



## GROOMING & SPAS

**Animal Motel** 262-781-5200  
13175 W. Silver Spring Rd. Butler  
www.animalmotel.net animalmotel@aol.com

Country Clip-Pets 262-783-5740  
13841 W. Capitol Dr. Brookfield

Cozy Lodge Doggie Day Care, LLC 262-334-8793  
1410 Lang St. West Bend

**Dawgs in Motion** 262-268-8000  
580 N. Dekora Woods Blvd. Saukville  
www.dawgsinmotion.com, admin@dawgsinmotion.com

Doggie Doo's Spa 414-704-6111  
4180 S. Howell Ave. Milwaukee

The Elegant Pet 414-750-4700  
www.theelegantpet.net info@theelegantpet.net

**EmBark Pet Spa** 414-747-8830  
1208 E. Oklahoma Ave. Milwaukee  
www.embarkpetspa.com embarkpetspa@att.net

Fancy Paws 414-481-7297  
4733 S. Packard Ave. Cudahy

Grooming by Katrina 262-646-9884  
2410 Milwaukee St. Delafield

KerMor Pet Grooming 262-241-8575  
10000 N. Port Washington Rd. Mequon

K-Nine Barber Shop 262-786-7550  
15970 W. National Ave. New Berlin

L.A. Grooming & Pet Services 262-369-0704  
303 Cottonwood Ave. Hartland

Logans Pet Grooming & Daycare 262-673-3330  
2962 State Road 83. Hartford

Pampered Paws 414-476-4323  
1826 N. Mayfair Rd. Wauwatosa

**Portable Pet Groomers** 877-268-2874  
www.portablepetgroomers.com  
shelley@portablepetgroomers.com

The Purrfect Pooch 262-338-7941  
162 E. Washington St. West Bend

**Snipz N' Tailz** 414-727-2980  
5121 W. Howard Ave. Milwaukee  
www.snipzntailz.com  
Dog & Cat Grooming



Receive **20% OFF**  
your dog's first groom!

Styl'n Companions Pet Spa 262-641-6087  
13844 W. Greenfield Ave. Brookfield



## INSURANCE SERVICES

**McCabe Group Insurance Services**  
866-961-1166  
4451 N. Oakland Ave. Shorewood  
www.mccabegroupins.com  
andrew@mccabegroupins.com

We are able to offer homeowners and renters insurance to people regardless of any kind of dog they may have. Call us today!

## INSURANCE PROBLEMS BECAUSE OF YOUR DOG?



**McCabe Group**  
Insurance Services

We can offer insurance policies regardless of any dog breed... Call us for a free quote!



## MOBILE SERVICES

The Elegant Pet 414-750-4700  
www.theelegantpet.net info@theelegantpet.net

**Portable Pet Groomers** 877-268-2874  
www.portablepetgroomers.com  
shelley@portablepetgroomers.com



## NATURAL THERAPY & CANINE MASSAGE

**Canine Massage Therapy** 414-704-8112  
Douglas J Arthur, Certified Canine Massage Therapist  
HOME VISITS ONLY marial@wi.rr.com

Certified in Canine Massage by the Boulder College of Massage Therapy, Boulder, Colorado.



Schedule a massage  
for your dog today.

marial.netfirms.com  
/doug.html

**Fluffy Dog Wellness** 262-538-2535  
www.fluffydog.net lori@fluffydogwellness.com

**The Natural Pet**

2532 E. Oklahoma Ave.  
www.thenaturalpetllc.com

414-482-PETS  
Bay View  
thenaturalpet@wi.rr.com

Specializing in natural and non-toxic foods and treats, toys, leashes, collars, oils, vitamins, and more.

**\$2.00 OFF**  
your total purchase of  
**\$20.00 or more**

**Silver Spring Animal Wellness Center**

414-228-7655

1405 West Silver Spring Drive  
www.vetcor.com/glendale

Milwaukee

For teeth as white as snow,

we are offering **10% off**

**dental cleanings**

through **March 5th, 2009.**

**PET CEMETERY/CREMATORY****Companion's Rest Pet Cemetery**

4001 South 27th Street

414-282-6600

Greenfield

www.cemeteriesforpets.com, anderson@oakstllc.com

**PET RELOCATION****Animal Motel**

13175 W. Silver Spring Rd.  
www.animalmotel.net

262-781-5200

Butler

animalmotel@aol.com

**PET SITTING/DOG WALKING**

Bay View Pampered Pets

Serving Bay View and Beyond

414-486-1891

Mequon Pet Care

Covering Mequon, Thiensville, Cedarburg, Grafton, Fox Point, River Hills, and Bayside area.

262-305-1275 / 262-243-1273

North Shore Pet Connection LLC

Serving the North Shore area.

414-352-8464

Paw Driven

Downtown, Shorewood, Whitefish Bay, Metro Milwaukee

414-550-2423 or 404-414-7469

**PET WASTE REMOVAL****CT Scoops LLC**

www.scoopsremoval.com

Milwaukee, Ozaukee, Waukesha, Washington Counties

Milwaukee Pooper Scoopers

Dog Waste Removal, Dog Walking, Free Quotes

920-213-8800

**Pile Patrol**

Serving Most of Southeastern Wisconsin

www.pilepatrol.com

414-6K9-POOP

pilepatrol@wi.rr.com

**PHOTOGRAPHY & ARTISTRY****Canvas Art Pet Portraits by Alan Fine Art Photography**

920-452-4244

www.alanfineartphotography.com

aschefskey@alanfineartphotography.com

In-Focus Photography

www.infocusphotography.org

414-483-2526

Power Paws - K9 Sport Photography

N60 W22849 Silver Spring Dr.

262-820-0763

Sussex

**Stephanie Bartz Photography**

414-453-2060

www.sbartzphotography.com

stephanie@sbartzphotography.com

Experience shooting in moving vehicles, on a motorcycle, from water raft, in a kayak, and also on land. Patience with shy, sassy kids, K-9s, and grown-ups. Keeping surprise photo shoots under wraps.

**RETAIL/ONLINE STORES****Animal Fairy Charities**

www.animalfairycharities.org

info@animalfairycharities.org

Fostering national & international prevention of cruelty to all animals and aiding in their safety & welfare.

**Bark N' Scratch Outpost**

5835 W. Bluemound Rd

www.barknscratchoutpost.com

414-444-4110

Milwaukee

**15% off**

28.6# Innova Evo  
Red Meat Small Bites

Regular price **\$62.99**  
sale price **\$53.54**

28.6# size only, in stock product only

expires 5/31/2009

**Doggy Toyland**

www.doggytoyland.com

715-345-1314

myra@doggytoyland.com

Dogs & Their People

W226 S5720 Woodside Ct.

262-548-3979

Waukesha

**Metropawlis**

317 N. Broadway

www.metropawlis.com petlover@metropawlis.com

414-273-PETS

Milwaukee

**The Natural Pet**

2532 E. Oklahoma Ave.

www.thenaturalpetllc.com

thenaturalpet@wi.rr.com

414-482-PETS

Bay View

Specializing in natural and non-toxic foods and treats, toys, leashes, collars, oils, vitamins, and more.

(See coupon to the upper left)

**Petlicious Dog Bakery & Pet Spa**

262-548-0923

2217 G. Silvernail Rd

www.petlicious.com

Pewaukee

barkback@petlicious.com

Healthy, all natural treats for dogs, cats, and horses. Our Pet Spa offers full service grooming and 4 custom made tubs for self serve dog wash.

**Pawprints Across Your Heart**

414-423-5800

5686 Broad Street

www.GiftsForPaws.com

Greendale

shop@giftsforpaws.com

We offer "Gifts for Pets and the Hearts They Touch."

Pet Supplies 'N' More

S83 W20411 Janesville Rd.

262-679-6776

Muskego

**TRAVEL & LODGING****Wisconsin Innkeepers Association**

www.wisconsinlodging.info

Convenient Motels along the interstate. Quiet Cabins in the woods. Elegant Hotels in the city. Relaxing Resorts on the lake. Cozy Bed & Breakfasts in a quaint town. With these unique accommodations, there is something for everyone...even your four-legged friend.

**VETERINARY/EMERGENCY****Advanced Animal Hospital**

414-817-1200

3374 West Loomis Road

www.advancedanimalhospital.com

aahgreenfield@yahoo.com

Greenfield

Advanced Animal Hospital can take care of the basic needs of your pets from vaccines and wellness care to hospitalization and boarding. We have the capabilities to do specialty surgeries, ultrasound, digital radiography and more. Present this coupon for 50% off your pet's first visit at Advanced Animal Hospital.

**50% OFF**  
**FIRST EXAM**

**Animal Doctor**

S73 W16790 Janesville Rd.

www.animaldoctormuskego.com

414-422-1300

Muskego

Animal Dr. has a full-service canine rehab facility offering an underwater treadmill with jets, therapeutic ultrasound, electric stimulation, cold laser and therapeutic exercises. We also offer spinal manipulative therapy, acupuncture, custom orthotic braces, weight loss and conditioning programs, and nutritional and herbal consults.

Brentwood Animal Hospital

318 W. Ryan Rd.

414-762-7173

Oak Creek

Crawford Animal Hospital

4607 S. 108th St.

414-529-3577

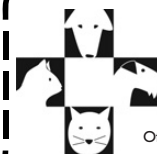
Milwaukee

**East Towne Veterinary Clinic**

262-241-4884

11622 N. Port Washington Rd.

Mequon



CHOOSE YOUR SAVINGS

**10% off**

any retail purchase, exam,  
or grooming service

Offering full clinical service, dental, grooming,  
lodging and retail products since 1984.

**Family Pet Clinic** 262-253-2255  
N73 W13583 Appleton Avenue Menomonee Falls  
www.FamilyPetClinic.org

Forest Home Animal Clinic 414-425-2340  
11222 West Forest Home Ave. Franklin

Harmony Pet Care 262-446-2273  
1208 Dolphin Ct Waukesha

**Hartland Animal Hospital** 262-367-3322  
140 North Ave. Hartland  
www.hartlandanimalhospitalwi.com

Medical | Surgical | Dentistry | Spay | Neuter | Microchip  
X-Rays | Allergy Testing | Ultrasound | Pet Food  
Prescription Diet Foods

Keeping Your Pets  
Healthy & Happy!

Michael Aspan, DVM  
Maureen Shaughnessy, DVM



Lake Country Veterinary Care 262-369-1609  
600 Hartbrook Dr. Hartland

Lakeside Animal Hospital, LTD 414-962-8040  
211 West Bender Rd. Glendale

The Little Animal Hospital, S.C. 262-377-7300  
2590 Highway 32 Port Washington

**Milwaukee Emergency Care for Animals (MECA)**  
3670 S. 108th Street Greenfield  
www.marlameca.com info@marlameca.com

Mukwonago Animal Hospital 262-363-4557  
1065 N. Rochester St. Mukwonago

My Pet's Vet 262-240-2215  
11422 N. Port Washington Ave. Mequon

**New Berlin Animal Hospital** 262-782-6910  
3840 S. Moorland Ave. New Berlin  
www.nbanhosp.com

Park Pet Hospital 414-352-1470  
7378 N. Teutonia Ave. Milwaukee

Prairie Animal Hospital 262-392-9199  
137 Oakridge Drive North Prairie

Saukville Veterinary Clinic LLC 262-284-7000  
303 W. DeKora St. Saukville

Sullivan Veterinary Service 262-593-8021  
103 Main St. Sullivan

Tender Touch Veterinary Care 262-673-2990  
1471 E. Summer St. Hartford

Veterinary Village 920-269-4072  
N11591 Columbia Drive Lomira

West Allis Animal Hospital Inc. 414-476-3544  
1736 S. 82nd West Allis

**Wisconsin Veterinary Referral Center**  
Waukesha  
360 Bluemound Road 866-542-3241  
Grafton  
1381 Port Washington Rd. 262-546-0249  
www.wivrc.com

WVRC is the Midwest's Leader in Veterinary Specialty & Emergency Care.



Woodview Veterinary Clinic 262-338-1838  
3284 Lighthouse Ln. West Bend

**Fetch**   
Magazine

## Madison Area Canine Marketplace



### ACUPUNCTURE & MASSAGE

**AnShen Veterinary Acupuncture**  
608-333-7811  
House/Farm/Clinic by appointment. Madison  
www.anshenvet.com drjody@anshenvet.com



### BOARDING & KENNELS

**Camp K-9 Pet Care Center** 608-249-3939  
4934 Felland Rd Madison  
www.campk9petcare.com  
Stay Play Pamper  
\*Voted Madison's Favorite 2008 (Madison Magazine)

**Ruffin' It Resort** 608-310-4299  
635 Struck St. Madison  
www.ruffinitresort.com simba@ruffinitresort.com

Sullivan Veterinary Service 262-593-8021  
103 Main St. Sullivan

Verona Boarding Service 608-848-3647  
65 Half Mile Rd Verona



### DENTISTRY SPECIALISTS

**Animal Dental Center** 888-598-6684  
2409 Omro Rd., Oshkosh 920-233-8409  
2100 Silver Spring Rd., Glendale 414-540-6710  
www.mypetsdentist.com dale@vin.com

The Animal Dental Center of Milwaukee and Oshkosh is a veterinary specialty practice devoted to you, your pets and your primary care vet. Providing dental and oral surgical services for companion animals throughout Wisconsin. For more info, visit www.mypetsdentist.com.

### Veterinary Dental Specialists

Dale Kressin, DVM, FAVD, DAVDC  
Oral Surgery & Dentistry



### DOG CAMPS

**Camp Dogwood** 312-458-9549  
www.campdogwood.com  
Spring Camp May 22-25!

**Dog Days of Wisconsin Dog Camp**  
1-800-Camp-4-Dogs  
www.dogcamp.com summercamp@dogcamp.com  
Camp dates in '09 August 21-24 & August 28-31.



### DOG TRAINING

The Teacher's Pet Dog Training 414-282-7534  
www.theteacherspetdog-training.com



### DOGGY DAY CARE

**Central Bark Doggy Day Care**  
Locations throughout south & southeast Wisconsin.  
www.centralbarkusa.com

Madison Southeast 608-663-8300  
2530 Advance Rd. Madison

**Free Behavior Assessment**  
(with first day of day care)

Offer good at all area locations.  
For a location near you, visit  
www.centralbarkusa.com

**\$20 Savings**



Dawg Dayz Grooming & Care, LLC 608-850-4911  
5305 W. River Rd. Waunakee

Happy Dogz 608-831-1283  
3148 Deming Way Middleton

Happy Dogz 608-278-8563  
6060 McKee Rd Madison

**Ruffin' It Resort** 608-310-4299  
635 Struck St. Madison  
www.ruffinitresort.com simba@ruffinitresort.com

**FOOD & TREATS**

**Chewed for Thoughts** 414-303-8839  
[www.chewedforthoughts.com](http://www.chewedforthoughts.com)  
[info@chewedforthoughts.com](mailto:info@chewedforthoughts.com)

Unique, edible biscuit cards with jingles and poems for different occasions.

Sullivan Veterinary Service 262-593-8021  
 103 Main St. Sullivan

**GROOMING & SPAS**

**Finer Details Pet Spa** 608-795-9837  
 5502 Mahocker Rd. Mazomanie  
[www.wisconsinpetstylists.org](http://www.wisconsinpetstylists.org)  
[finerdetailssalon@gmail.com](mailto:finerdetailssalon@gmail.com)

Spring Harbor Animal Hospital 608-238-3461  
 5129 University Avenue Madison

**INSURANCE SERVICES****McCabe Group Insurance Services**

866-961-1166  
 4451 N. Oakland Ave. Shorewood  
[www.mccabegroupins.com](http://www.mccabegroupins.com)  
[andrew@mccabegroupins.com](mailto:andrew@mccabegroupins.com)

We are able to offer homeowners and renters insurance to people regardless of any kind of dog they may have. Call us today!

**INSURANCE PROBLEMS  
BECAUSE OF YOUR DOG?**

**McCabe Group**  
 Insurance Services

We can offer insurance policies regardless of any dog breed... Call us for a free quote!

**LEGAL SERVICES**

DeWitt Ross & Stevens 608-255-8891  
 Two East Mifflin Street, Suite 600 Madison

Atty. David G. Stokes 608-273-2337  
 437 S. Yellowstone Dr. #113 Madison

**NATURAL THERAPY &  
CANINE MASSAGE****AnShen Veterinary Acupuncture**

608-333-7811  
 House/Farm/Clinic by appointment. Madison  
[www.anshenvet.com](http://www.anshenvet.com) [drjody@anshenvet.com](mailto:drjody@anshenvet.com)

**Finer Details Pet Spa** 608-795-9837  
 5502 Mahocker Rd. Mazomanie  
[www.wisconsinpetstylists.org](http://www.wisconsinpetstylists.org)  
[finerdetailssalon@gmail.com](mailto:finerdetailssalon@gmail.com)

**PHOTOGRAPHY &  
ARTISTRY**

**Canvas Art Pet Portraits by Alan Fine Art Photography**  
 920-452-4244

[www.alanfineartphotography.com](http://www.alanfineartphotography.com)  
[aschefsky@alanfineartphotography.com](mailto:aschefsky@alanfineartphotography.com)

**RETAIL/ONLINE STORES**

Doggy Toyland 715-345-1314  
[www.doggytoyland.com](http://www.doggytoyland.com) [myra@doggytoyland.com](mailto:myra@doggytoyland.com)

Dogs & Their People 262-548-3979  
 W226 S5720 Woodside Ct. Waukesha

**TRAVEL & LODGING**

**Wisconsin Innkeepers Association**  
[www.wisconsinlodging.info](http://www.wisconsinlodging.info)

Convenient Motels along the interstate. Quiet Cabins in the woods. Elegant Hotels in the city. Relaxing Resorts on the lake. Cozy Bed & Breakfasts in a quaint town. With these unique accommodations, there is something for everyone...even your four-legged friend.

**VETERINARY/EMERGENCY**

**Animal Doctor** 414-422-1300  
 S73 W16790 Janesville Rd. Muskego  
[www.animaldoctormuskego.com](http://www.animaldoctormuskego.com)

Animal Dr. has a full-service canine rehab facility offering an underwater treadmill with jets, therapeutic ultrasound, electric stimulation, cold laser and therapeutic exercises. We also offer spinal manipulative therapy, acupuncture, custom orthotic braces, weight loss and conditioning programs, and nutritional and herbal consults.

Animal Hospital at Hillshore 608-238-3139  
 2837 University Ave. Madison

Animal Hospital of Sun Prairie 608-837-5383  
 2125 McCoy Rd. Sun Prairie

Companion Animal Hospital 608-277-8888  
 660 S. Gammon Rd. Madison

Deer-Grove Veterinary Clinic 608-839-5323  
 535 Southing Grange Ste 200 Cottage Grove

Eastside Veterinary Clinic 608-221-8460  
 4421 Cottage Grove Rd. Madison

Healthy Pet Veterinary Clinic 608-294-9494  
 1440 E. Wash Ave. Madison

Spring Harbor Animal Hospital 608-238-3461  
 5129 University Avenue Madison

Sullivan Veterinary Service 262-593-8021  
 103 Main St. Sullivan

UW School of Veterinary Medicine 608-263-7600  
 2015 Linden Drive Madison

**Racine & Kenosha Canine Marketplace****ANIMAL COMMUNICATION**

Sacred Animal Spirit 262-939-4964  
[sacredanimalspirit@yahoo.com](mailto:sacredanimalspirit@yahoo.com)

**BOARDING & KENNELS**

**7 Mile Pet Boarding and Grooming**  
 262-835-4005  
 8181 W. 7 Mile Rd. Franksville  
[www.7milepets.com](http://www.7milepets.com) [7milekennels@sbcglobal.net](mailto:7milekennels@sbcglobal.net)

Orphaned Kanines 262-681-1415  
 1922 Kremer Avenue Racine

**DENTISTRY SPECIALISTS**

**Animal Dental Center** 888-598-6684  
 2409 Omro Rd., Oshkosh 920-233-8409  
 2100 Silver Spring Rd., Glendale 414-540-6710  
[www.mypetsdentist.com](http://www.mypetsdentist.com) [dale@vin.com](mailto:dale@vin.com)

The Animal Dental Center of Milwaukee and Oshkosh is a veterinary specialty practice devoted to you, your pets and your primary care vet. Providing dental and oral surgical services for companion animals throughout Wisconsin. For more info, visit [www.mypetsdentist.com](http://www.mypetsdentist.com).

**Veterinary Dental Specialists**

**Dale Kressin, DVM, FAVD, DAVDC**  
 Oral Surgery & Dentistry

**DOG CAMPS**

**Camp Dogwood** 312-458-9549  
[www.campdogwood.com](http://www.campdogwood.com)  
 Spring Camp May 22-25!

**Dog Days of Wisconsin Dog Camp**  
 1-800-Camp-4-Dogs [www.dogcamp.com](http://www.dogcamp.com)  
[summercamp@dogcamp.com](mailto:summercamp@dogcamp.com)

Camp dates in '09 August 21-24 & August 28-31.

**DOG TRAINING**

Dogdom International 262-942-1860  
 10105 32nd Avenue Pleasant Prairie

**Paws-itivity Behaved K9s** 262-488-1982  
9823 S. 13th St. Oak Creek  
www.pawsitivityk9s.com tgutman@wi.rr.com

Proper Paws University  
5150 60th St. Kenosha  
262-925-PAWS  
2625 Eaton Ln Racine  
262-634-PAWS  
www.properpawsuniversity.com

Sirius Companion Dog Training 414-698-3223  
Classes held at Puppy Playground in Oak Creek.

**The Teacher's Pet Dog Training**  
414-282-7534  
www.theteacherspetdog-training.com

**Waggin Tails Dog Training**  
262-880-8609  
1944 Wustum Ave. Racine  
www.waggingtailsdogtraining.com  
info@waggingtailsdogtraining.com

Private in-home dog training using positive reinforcement methods. 35 years experience.



## DOGGY DAY CARE

**Central Bark Doggy Day Care**  
Locations throughout south & southeast Wisconsin.  
www.centralbarkusa.com

Kenosha 262-694-DOGS (3647)  
7600 75th St., Suite #202 Kenosha  
Racine 262-456-4021  
5326 Durand Ave. Racine

**Free Behavior Assessment**  
(with first day of day care)

Offer good at all area locations.  
For a location near you, visit  
www.centralbarkusa.com

**\$20 Savings**



## FOOD & TREATS

**3 Goldens And A Gator** 262-752-9010  
5200 Douglas Avenue, Suite C Racine  
3goldensandagator@att.net

**Chewed for Thoughts** 414-303-8839  
www.chewedforthoughts.com  
info@chewedforthoughts.com

Unique, edible biscuit cards with jingles and poems for different occasions.

**The Natural Pet** 414-482-PETS  
2532 E. Oklahoma Ave. Bay View  
www.thenaturalpetllc.com thenaturalpet@wi.rr.com

Specializing in natural and non-toxic foods and treats, toys, leashes, collars, oils, vitamins, and more.

**\$2.00 OFF**  
your total purchase of  
**\$20.00 or more**



## GROOMING & SPAS

A 1 Grooming by Barbie 262-554-1237  
2625 Eaton Ln Racine

**Portable Pet Groomers** 877-268-2874  
www.portablepetgroomers.com  
shelley@portablepetgroomers.com



## INSURANCE SERVICES

**McCabe Group Insurance Services**  
866-961-1166  
4451 N. Oakland Ave. Shorewood  
www.mccabegroupins.com  
andrew@mccabegroupins.com

We are able to offer homeowners and renters insurance to people regardless of any kind of dog they may have. Call us today!

## INSURANCE PROBLEMS BECAUSE OF YOUR DOG?



**McCabe Group**  
Insurance Services

We can offer insurance policies regardless of any dog breed... Call us for a free quote!



## MOBILE SERVICES

**Portable Pet Groomers** 877-268-2874  
www.portablepetgroomers.com  
shelley@portablepetgroomers.com



## PET CEMETERY/CREMATORY

**Companion's Rest Pet Cemetery** 414-282-6600  
4001 South 27th Street Greenfield  
www.cemeteriesforpets.com, manderson@oakstllc.com

Andersons Pet Valhalla  
10025 Kraut Rd. Franksville



## PHOTOGRAPHY & ARTISTRY

**Canvas Art Pet Portraits by Alan Fine Art Photography**  
920-452-4244  
www.alanfineartphotography.com  
aschefsky@alanfineartphotography.com



## RETAIL/ONLINE STORES

**3 Goldens And A Gator** 262-752-9010  
5200 Douglas Avenue, Suite C Racine  
3goldensandagator@att.net

**Doggy Toyland** 715-345-1314  
www.doggytoyland.com myra@doggytoyland.com

**Dogs & Their People** 262-548-3979  
W226 S5720 Woodside Ct. Waukesha

## The Natural Pet

2532 E. Oklahoma Ave.  
www.thenaturalpetllc.com  
thenaturalpet@wi.rr.com

414-482-PETS  
Bay View

Specializing in natural and non-toxic foods and treats, toys, leashes, collars, oils, vitamins, and more.  
(see coupon lower left)



## TRAVEL & LODGING

### Wisconsin Innkeepers Association

www.wisconsinlodging.info

Convenient Motels along the interstate. Quiet Cabins in the woods. Elegant Hotels in the city. Relaxing Resorts on the lake. Cozy Bed & Breakfasts in a quaint town. With these unique accommodations, there is something for everyone...even your four-legged friend.



## VETERINARY/EMERGENCY

### Animal Doctor

414-422-1300  
S73 W16790 Janesville Rd. Muskego  
www.animaldoctormuskego.com

Animal Dr. has a full-service canine rehab facility offering an underwater treadmill with jets, therapeutic ultrasound, electric stimulation, cold laser and therapeutic exercises. We also offer spinal manipulative therapy, acupuncture, custom orthotic braces, weight loss and conditioning programs, and nutritional and herbal consults.

**Brentwood Animal Hospital** 414-762-7173  
318 W. Ryan Rd. Oak Creek

**Burlington Longview Animal Hospital, Inc.** 262-763-6055  
688 McHenry St. Burlington

**Creature Comforts** 262-767-9392  
6023 South Pine Street Burlington

**Deer-Grove Veterinary Clinic** 608-839-5323  
535 Southing Grange Ste 200 Cottage Grove

**Racine Veterinary Hospital** 262-554-8666  
5748 Taylor Avenue Racine

**Wolf Merrick Animal Hospital** 262-652-4266  
4415 52nd Street Kenosha

**Would you like to list  
your business in the  
Canine Marketplace?**

Find information at:

**www.fetchmag.com**

**Click on 'Advertise with us'  
at the bottom.**

# A New Leash on Life - Canine Rehabilitation

Not just for humans anymore, the benefits of physical therapy are available to dogs. Although introduced to veterinarians over 20 years ago, canine rehabilitation is still a new branch of veterinary medicine. Much like a human physical therapist, a rehab-trained veterinarian assesses a patient to determine exercises, rehabilitation equipment and therapies that will help the dog recover. Though usually associated with post-surgery or injury treatment, there are applications for overweight dogs, sport/hunting dogs and dogs suffering from old age.

"We want to get the word out to pet owners and veterinarians that this service exists," says Barb Stollenwerk. She was introduced to canine rehabilitation when her cousin and friend Mary Kilpatrick's dog tore its ACL, a ligament in the knee. After surgery, the veterinarian told Kilpatrick the dog would benefit from rehabilitation. She was stymied - canine physical ther-

apy? The nearest location was a renowned center in Illinois called Tops Veterinary Rehabilitation. Kilpatrick called Stollenwerk when she got to the center and said, "This is incredible."

Stollenwerk went with her the next time and was awed by what was being accomplished. It was truly helping dogs' quality of life. The two decided to get involved. As neither were veterinarians, they choose to work in partnership with vets who had the rehab training and were interested in starting rehab programs in Wisconsin. They used their own money to purchase equipment for the veterinary clinics, who then staffed and ran the operations. The revenue is shared.

Stollenwerk and Kilpatrick market the rehab clinics under Veterinary Rehab Marketing Specialists, LLC and educate people about them. As fate would have it, Stollenwerk's own chocolate lab soon needed rehabilitation when he herniated a disc playing in the backyard. Even

after surgery, he still couldn't walk or wag his tail, but rehab helped him make a nearly full recovery and he's romping around four years later. "I've experienced it first hand and am really impressed with it," says Stollenwerk.

One of the veterinary clinics that Stollenwerk and Kilpatrick are partnered with is Animal Doctor Holistic Veterinary Complex in Muskego. It is there that they met Dr. Becky McCracken who oversees the Animal Doctor rehab program. "She is so passionate about it and excellent at it," Stollenwerk says. The three are working together to bring a dedicated canine rehab facility to Southeastern Wisconsin called PawsAbility Veterinary Rehabilitation (for paws and abilities, which is what they try to give the animals back) located in Sturtevant.

Becky McCracken, DVM says some veterinary colleges are just not aware of canine rehab, since it's a fairly new field. With education at national veterinary meetings



## MILWAUKEE PUGFEST

**SUNDAY, MAY 17, 2009**  
**11:00am – 4:00pm**

**SPONSORED BY:**




Over 50,000 sq. ft. of INDOOR climate controlled facility. Rubber matted facility.  
4,800 sq. ft. of OUTDOOR fenced space for Pugs to roam. Indoor Pug Pen and Owner Oasis (Bring your chairs, etc.) Truly a family event.

**For More information:**  
Email: [milwaukeekeepugfest@yahoo.com](mailto:milwaukeekeepugfest@yahoo.com)  
See our website for latest updates:  
[www.milwaukeekeepugfest.com](http://www.milwaukeekeepugfest.com)

**INDOOR LOCATION**  
Milwaukee County Sports Complex  
6000 West Ryan Rd (Hwy 100) (I-94 Exit 322) • Franklin, WI

and pet owners spreading the word, McCracken hopes it will soon become a specialty.

Canine rehabilitation has lots of applications. There are problems associated with old age that veterinary science has limited or no way to heal. Pet owners are told there's nothing that can be done about issues like arthritis, nerve disease, hip or elbow dysplasias or other chronically painful conditions. That's where rehab can be a real asset. When McCracken's dog started suffering some of these issues, she tried alternative treatments. "Rehab gave her three more years of quality life... and it made an absolute believer out of me," says McCracken.

She is quick to point out rehabilitation isn't a substitute for conventional veterinary medicine, but when conventional treatments aren't producing results, it's another tool in the toolbox. And it can be used in so many instances.

Obesity is one issue McCracken knows dog owners have difficulty with. "They just can't say no to those brown eyes," says McCracken. Any type of water exercise, such as an underwater treadmill, works great fighting obesity by providing low impact exercise. The water holds most of the weight, but the dog is still able to move and burn calories. Besides the obvious joint and muscle problems associated with obesity, Purina recently did a study that revealed keeping dogs at an appropriate weight adds two years to their lives.

Sport dogs are another candidate for the rehabilitation clinics. "They're athletes, just like human athletes," says McCracken. If the dog has a bad jump style, which may result in a problem later, McCracken recommends certain exercises that create a muscle memory that will correct it. There are always ways to build up muscles to prevent injury. A number of dogs use McCracken's Sturtevant facility for off-season conditioning as well, when the Wisconsin winter is in full swing.

Rehab ranges in price, but users can expect to pay around \$60 for a single

treatment, or around \$400 for a pack of treatments (plus the initial assessment fee). However, users of the rehabilitation centers consider it well worth the money. Stollenwerk says, "If you spent a lot of

Find out more:  
America Holistic Veterinary Medical Association  
(AHVMA) Online  
<http://ahvma.org>, Choose "Find a Holistic Vet"  
as they will know who is doing rehabilitation

Animal Doctors Romp and Rehab, Muskego, Wis.  
414-422-1300, [www.animaldoctormuskego.com](http://www.animaldoctormuskego.com)

PawsAbility, Sturtevant, Wis. and Becky McCracken, DVM  
[rjmc01@mac.com](mailto:rjmc01@mac.com), 262-939-5668

Tops Veterinary Rehabilitation, Grayslake, Ill.  
847 548-9470, [www.tops-vet-rehab.com](http://www.tops-vet-rehab.com)

Veterinary Rehab Marketing Specialists  
[www.veterinaryrehabmarketing.com](http://www.veterinaryrehabmarketing.com)

money on orthopedic surgery (Henry's was \$3,500) rehab is a fraction of the cost. And it really helps dogs make a fuller and faster recovery."

Dr. McCracken says rehabilitation centers include acupuncture, chiropractic, massage therapy, exercise therapy, therapeutic ultrasound, e-stim (electric stimulation for muscle contraction), and some kind of swim tank or underwater treadmill for thorough treatment, plus a caring vet. McCracken says, "I'd been a vet for 20 years and loved what I did. Just when I was asking 'what more can I do' I found this." It shows in McCracken's determination to help every dog that comes through her door with their unique challenges and recovery goals. Stollenwerk and Kilpatrick contribute by letting dog owners know it's available here in Southeastern Wisconsin, and that it works.

**Emily Refermat** is a dog lover and long-time writer who just isn't content without a pen in hand and the prod of a cold nose.

Read this issue & more  
online at  
[www.fetchmag.com](http://www.fetchmag.com)

## K9 Swim Center Now Open in Oconomowoc

*Dog Training & K9 Splash Swim Center*

### POSITIVE & MOTIVATIONAL DOG TRAINING

Think Pawsitive is a 7200 square foot dog training facility located in Oconomowoc, Wisconsin.

Private Lessons Agility Classes/Seminars Puppy and Adult Classes  
K9 Splash Swim Center Pet Supplies and Toys

Our K9 pool is 32 feet long by 16 feet wide and deep enough for large dogs to swim. Heated to a constant 88 degrees.

Swimming is great way for K9 exercise and conditioning the K9 athlete. All Dogs are supplied with a doggie life preserver. There is a ramp for easy access in and out of the pool. 20 minute or 50 minute supervised private sessions available by appointment. As your friend is splashing around enjoy, laugh and throw them their favorite toy.



**Think  
Pawsitive LLC**  
Dog Training

N58 W39835 Industrial Rd.  
Oconomowoc, WI • 262-893-9540

[info@thinkpawsitivedog.com](mailto:info@thinkpawsitivedog.com) • [www.thinkpawsitivedog.com](http://www.thinkpawsitivedog.com)



# On the Prowl

## *Dating with Dogs*

OK, so we're not talking about dating your dog or helping your dog get the hook up, but when you're a singleton attached to a canine does that change how you play the game? Are non-dog types sent to the benches?

I have to admit I'm pretty biased here. I met a great guy, funny, sweet and a doctor, but he wasn't into my dog. In fact he wasn't really into pets at all. That was tough considering I also had cats and a career in veterinary medicine. I had to send my McDreamy packing. He'll just never understand why the dog park is the best place to be on a Saturday morning or why my Golden gets the other half of the couch on movie night. Love me - love my dog.

I'm not alone in my opinions. Online forums are filled with questioning dog lovers; do I dump my non-dog romance? Check out this one found on eharmony.com "A friend has been dating "the one" for about 8 months. He asked her to move in with him. She was elated - until he made it clear the invitation didn't include her dog. Who goes and who stays?" The responses were overwhelmingly "the one" who went.

Online forums aren't the only place dog owners turn to for dating help.

There has been an explosion in the number of online dating sites devoted solely to pet owners. Sites like [www.datemypet.com](http://www.datemypet.com), [www.animalpeople.com](http://www.animalpeople.com) and [www.doglover.biz](http://www.doglover.biz) offer clients the opportunity to search for love, friendship or canine play dates in a modern age.

Need more proof of doggy devotion? In a survey conducted by the American Kennel Club, sixty-six percent of dog owners could not imagine getting involved with someone who wasn't comrades with their canines. So why all the love? Probably because our dogs are already our ultimate companions. Perk up your ears guys, the same AKC survey found that 90% of dog owning women had a least one puppy quality they would like to see in their beaus, with being in a perennial good mood topping the list. Thirty-four percent of women agreed that if their dog were a man, they'd date him.

Despite finding the dog devotee your destined to date, there can still be problems in puppy paradise. Just because Mr./Ms. Perfect has had dogs their entire life doesn't mean they love their pups the same way you do. Little things like Fido getting first choice for the futon while your significant other believes the floor is more appropriate can cause major conflict down the road. Also, the perfect pet person

usually comes with furry friends of his or her own; can you both create a peaceable kingdom? It's best to discuss these issues early on before the fur flies.

No matter what, keep the faith. With around 50 million dog owners in America the prospects look promising. I myself was lucky enough to snag one my next time around. We were introduced at a party due to our common canine interests, on our first date he crawled on the floor to give my Golden a tummy rub - despite wearing a black sweater - and he willingly delayed our wedding for a year so we could pay for my dog's chemotherapy with the funds. It doesn't get closer to puppy perfection than that.

**Keri Weyenberg** has had the good fortune to have spent the majority of her life in the company of canines. She currently shares her home with Sophie, a Golden Retriever, and Rufus the rebel beagle.

**Please Support the  
Advertisers who  
Support Us.**

**Tell Them You Saw Their  
Ad in Fetch Magazine**

dog waste removal  
dog walking services  
free quotes



**Milwaukee Pooper  
Scoopers**

[milwaukeepooperscoopers@yahoo.com](mailto:milwaukeepooperscoopers@yahoo.com)  
[www.milwaukeepooperscoopers.com](http://www.milwaukeepooperscoopers.com)  
**(920) 213-8800**

**Chewed  
for  
thoughts**

*The Greeting Worth Eating*

[www.chewedforthoughts.com](http://www.chewedforthoughts.com)



Featuring Edible Greeting Cards  
414-778-0726

## Dog Portraits on Location



**stephaniebartzPhotography**

414.453.2060

[www.sbartzphotography.com](http://www.sbartzphotography.com)

### Previous Articles

(More than 300+.)

Available Online at:

[www.fetchmag.com](http://www.fetchmag.com)



### Comprehensive Veterinary Services

- Compassionate Medical, Dental, & Wellness Care
- Laser Surgery
- Cat & Dog Boarding
- Hours By Appointment

Central Bark  
Doggy Day Care

**262-446-CARE(2273)**

1208 Dolphin Ct., Waukesha  
(Hwy. 164 By Walmart)  
[www.harmonypet.com](http://www.harmonypet.com)



sheltering animals of abuse victims

*Family violence affects pets too.  
Spread the word!*

[www.saaavprogram.org](http://www.saaavprogram.org)

[info@saaavprogram.org](mailto:info@saaavprogram.org)



CERTIFIED PROFESSIONAL PET GROOMING

1826 North Mayfair Road, Wauwatosa  
414-476-4323



**Fluffy Dog  
RESCUE**

a special place for special dogs  
[www.fluffydog.net](http://www.fluffydog.net)

## The Teacher's Pet Dog Training

Clicker Training • Dogs & Small Pets  
Behavior Consultant • In Home Training  
Service Dog Training

"I want to be a good dog."



Linda Bobot, CPDT  
Certified Pet Dog Trainer  
**414-282-7534**

[www.theteacherspetdog-training.com](http://www.theteacherspetdog-training.com)

# Jale's Story

**Last September she could walk. This past Fall she couldn't.**

She is Jale (pronounced "Holly"), our 10-year old Husky-Cocker Spaniel mix. There were no warning signs per se. She went from being a playful, physically active dog to one that we now need to pick up and carry. The change in her health was dramatic and has reshaped our other two dogs' life and certainly dramatically changed our lives.

The two younger dogs-two- and three-years-old-have learned to wait at the top of the stairs until Jale is carried out. They patiently pause at the gate until we carry "Queen" Jale in first. Bella, the youngest and still eager to engage in puppy games, play bows frequently. She furiously wags and wiggles her tail and butt trying to get Jale to join in, and then stops short of provoking an "I don't want to play" snarl from the "queen" of the pack. Together they accord Jale the space and quiet that she seems to want more these days. While she seemed depressed at first, as did we, she and we have adapted to the situation.

## Our legs are now hers.

We pick her up and carry her down the steps to go outside. We hold her up with the use of a harness so she can take care of her "chores." We pick her up to move her from room to room. We bring the water bowl to her when she's thirsty. We place her food in front of her. Some may not understand why we do what we do. It's quite simple. She's part of our family.

She's the one with the patience, courage, guts and grace. Not us.

Jale is the oldest of our three dogs and by far the fastest runner. She always reached us first when the dogs were recalled from across an open field or the backyard. Her spurts of speed were unsurpassed and every time she came blowing past us--her tail wagging, eyes wide as a Frisbee--we smiled at how happy she looked. Her nickname was "Bullet" and over the years she offered many an example of how she earned that moniker.

One time while family camping, without warning she started sprinting around the perimeter of the site. She did three or four furious laps then turned towards our tent. She leapt into the air for the screen door wanting to go inside. Not realizing it was closed, she bounced off the screen like a trampoline and back into her dog bed sitting at the base of the tent. She landed, quickly burying her snout into the plush bed while lying motionless, embarrassed. Anne thought she was hurt until she called her name and Jale quickly spun upside down begging for a belly rub. The dozen of us roared with laughter.

Jale is a howler. When we walk in the door she greets us with a few short howls. We get lots of loud "hello" howling when we



return from vacations or when people come to the house. She's never been a dog to bark just because she can bark.

She is a quiet, stay in the yard without being told dog. The only time Jale comes unglued is when we make a trip to the veterinarian. She can't

be calmed, consoled or convinced in any way that going doesn't need to be so dramatic. Her nerves get the best of her and she lets everyone know! When she's in the exam room, EVERYONE knows she's in the exam room. Her shrill, piercing howling grows even louder when the doctor comes in.... and she's hoarse and tired when the exam is over. Fortunately we have a very compassionate, caring and understanding veterinarian and support staff.

Now that she can't walk her communication with us has taken on new meanings and is vitally more important. A deep, lazy, lingering whine means she needs to go outside. A pitch lower means she wants to be closer to us. A short whine means she's thirsty. A year ago there was no reason to whine -- she would just walk into the same room. Now, without thinking, we get up and bring the water bowl to her.

We were sitting in the living room a year ago when she stood up from lying next to the couch--her favorite spot--to get a drink

## Proper Paws University

*Southeastern Wisconsin's Premier  
Dog Daycare, Canine Education, and  
Grooming Facility*



Check out our website for upcoming  
classes and special events!

[www.properpawsuniversity.com](http://www.properpawsuniversity.com)



**Kenosha Campus**  
5150 60th St. Kenosha, WI 53144  
262.925.PAWS (7297)

**Racine Campus**  
2625 Eaton Ln. Racine, WI 53404  
262.634.PAWS (7297)

## Forest Home Animal Clinic, SC

Providing comprehensive health care for your family's pet.



Dr. James Rieser  
Dr. Cynthia Farris

11222 W. Forest Home Ave.  
Franklin, WI 53132  
Hours By Appointment

**(414) 425-2340**

[www.foresthomeanimalclinic.com](http://www.foresthomeanimalclinic.com)

Deluxe Boarding - Doggie Daycare - Grooming - Training

of water. We both noticed something with her gait. The limp was subtle and barely detectable. At first we thought she might have strained a muscle or overworked a tendon in her leg while hiking during a recent camping trip. Maybe she just had a cramp? Or she slept on her leg wrong? She'll loosen up and whatever it is will stop bothering her, we reasoned. No big deal.

It was about a week after the limp first appeared that we realized it wasn't getting better and we called our veterinarian. He suggested giving her some existing medication we had remaining from a prior ailment. It wasn't until Anne emailed a photo of Jale to our vet that a sense of urgency emerged. She had noticed Jale's right hind paw was curled as she stood eating her dinner. Our vet wanted to see her as soon as possible.

Since that initial exam Jale's seen our vet several times. She's had a couple sets of x-rays and blood draws by our vet. She endured several MRIs and spinal taps and numerous other tests and exams by a board-certified neurologist and instructor in Chicago. In the end, the neurologist pronounced her as the healthiest 10-year-old that can't walk he's ever seen.

One year later Jale still has her spunk. She rolls around on the floor, moaning and play growling to get our attention and the belly rub or ear scratching that comes with it. She manages to do the "military crawl" in a burst of anxiousness to meet us at the door, to get to one of her favorite spots to rub her muzzle on our bed or when outside stroke her nose against the grass. And recently with our guidance she even momentarily stands.

Our hopes to have her recover enough to walk again have diminished. But the three girls are a still our pack. And as long as Jale continues to have her health, we won't mind being her legs.

When not playing or training with her three dogs, **Anne Skaradzinski** likes to write, photography and be outdoors when not at her full time job as a Project Manager at a web site development company.

**Daryl L. Skaradzinski** and his wife Anne share their home with three dogs. He's General Manager of the Milwaukee Post newspaper, enjoys traveling, camping with their pets, hot, spicy foods and cold beers and is an avid Packers fan.

## New 24/7 Animal ER for Milwaukee ER hospital for dogs, cats, & exotics Coming in JUNE 2009!

Fully-trained staff under the direction of  
**Marla Lichtenberger, DACVECC**  
Emergency Critical Care Specialist



### Milwaukee Emergency Care for Animals (MECA)

3670 S. 108th Street | Greenfield, WI  
info@erforanimals.com  
www.erforanimals.com



## Taking a Positive Approach to Dog Training

### Agility Run Thru's

2nd Friday of Each Month at 7:00pm

### ½ Pint Socials

(for dogs of all ages under 25 lbs.)

1st & 3rd Friday of Each Month at 6:30pm

Call to register!

**(262) 369-3935**  
www.bestpawforward.net



- ❖ Puppy Kindergarten
- ❖ Basic Obedience
- ❖ Novice Obedience
- ❖ Canine Good Citizen
- ❖ Rally Obedience
- ❖ Agility (puppy & adult)
- ❖ Therapy Dog Classes and Testing

2 Locations!

Hartland - off Hwy 83  
Pewaukee - off Hwy 164

"Spread the  
Word, We Pick  
Up Turd"



## PILE PATROL LLC. Pet Waste Removal Service

Pooper Scooper Service from **\$7.00** per week  
Litter Box Service from **\$5.50** per week

Weekly, twice a week, & bucket-only service,  
plus **SPRING CLEAN UPS.**

"We Service Most of Southeastern Wisconsin"

**(414)6K9-POOP**  
www.pilepatrol.com

Gift Certificates Available

# Calendar of **EVENTS**

## ANIMAL COMMUNICATION

**Mini Consultations w/ Rebecca Moravec**  
March 15th Noon - 4:00pm (reservations req.)  
April 5th Noon - 4:00pm (reservations req.)  
Petlicious Dog Bakery, Pewaukee  
262-548-0923, [www.petlicious.com](http://www.petlicious.com)

## CANINE MASSAGE

**Canine Massage w/ Doug Arthur**  
March 14th Noon - 4:00pm  
April 11th Noon - 4:00pm  
Petlicious Dog Bakery, Pewaukee  
262-548-0923, [www.petlicious.com](http://www.petlicious.com)

## CAMPS/CLASSES/SEMINARS

**Allergy, Anxiety & Arthritis Seminar by Dr. Chris Bessent of HERBSMITH**  
Saturday March 7th 10:00am - Noon  
Petlicious Dog Bakery, Pewaukee  
Cost: \$5.00  
262-548-0923, [www.petlicious.com](http://www.petlicious.com)

**Pet First Aid Class**  
March 7th 1:00 - 4:00pm  
April 18th 1:00 - 4:00pm  
May 2nd 1:00 - 4:00pm  
Humane Animal Welfare Society, Waukesha  
March 21st 2:00 - 5:00pm  
April 25th 2:00 - 5:00pm  
May 16th 2:00 - 5:00pm  
Madison Area  
262-879-0165, [www.hawspets.org](http://www.hawspets.org)

**Let's Talk About Boarding Your Pet**  
March 14th, 1:00pm  
April 11th, 1:00pm  
May 9th, 1:00pm  
Animal Motel, Butler  
262-781-5200, [www.animalmotel.net](http://www.animalmotel.net)

**How to Raise a Puppy & Keep Your Sanity!**  
March 15th 1:00pm (FREE)  
HAWS, Waukesha  
262-542-8851, [www.hawspets.org](http://www.hawspets.org)

**The Emotional Life of Animals**  
Patricia McConnell Lecture  
March 19th 7:00 - 8:30pm  
Central Library Centennial Hall, Milwaukee  
414-ANIMALS, [www.wihumane.org](http://www.wihumane.org)

**Pet First Aid Class**  
March 21st 2:00 - 5:00pm  
April 25th 2:00 - 5:00pm  
May 16th 2:00 - 5:00pm  
Madison - Call for location.  
262-879-0165, [www.hawspets.org](http://www.hawspets.org)

**First Aid for Dogs & Cats**  
March 25th 6:30 - 8:45pm (\$60)  
Wisconsin Humane Society, Milwaukee  
414-ANIMALS, [www.wihumane.org](http://www.wihumane.org)

**Solving Common Canine Behavior Problems**  
March 30th 6:30pm (FREE)  
HAWS, Waukesha  
262-542-8851, [www.hawspets.org](http://www.hawspets.org)

**DOGA - Yoga for Dogs**  
March 31st, April 19th, May 17th  
Ruffin' It Resort, Madison  
608-310-4299, [www.ruffinitresort.com](http://www.ruffinitresort.com)

**Dog Behavior Seminar**  
April 9th 6:30 - 8:30pm  
May 5th 6:30 - 8:30pm  
Wisconsin Humane Society, Milwaukee  
414-ANIMALS, [www.wihumane.org](http://www.wihumane.org)

**Sanctioned TDAA Working Seminar**  
"Changing Sides & Direction"  
April 24th 6:45pm  
Proper Paws University, Kenosha  
262-925-PAWS, [www.properpawsuniversity.com](http://www.properpawsuniversity.com)

**Camp Dogwood Winter Camp**  
May 22nd - 25th  
312-458-9549, [www.campdogwood.com](http://www.campdogwood.com)

## DOG SHOWS/COMPETITIONS

**Leonberger Club of America Dog Show**  
April 2nd - 4th  
Olympia Resort & Spa, Oconomowoc  
[www.olympiareSORT.com](http://www.olympiareSORT.com)

**TDAA Sanctioned Agility Trials**  
April 25th & 26th  
Proper Paws University, Kenosha  
262-925-PAWS,  
[www.properpawsuniversity.com](http://www.properpawsuniversity.com)

**Belgian Sheepdog National Dog Show**  
April 29th - May 3rd  
Olympia Resort & Spa, Oconomowoc  
[www.olympiareSORT.com](http://www.olympiareSORT.com)

## EXPOS/FUNDRAISERS/GATHERINGS

**Milwaukee Pet Store Protesting**  
March 1st Noon - 3:00pm Petland, Pewaukee  
March 11th 9:30am Thorp Dog Auction, Thorp  
March 21st 11:00am - 3:00pm Petland, Pewaukee  
April 5th 11:00am - 3:00pm Puppy World, Grfd  
April 25th 11:00 - 3:00pm Puppy World, Grfd  
May 3rd 11:00am - 3:00pm Puppy World, Grfd  
May 15th 11:00am - 3:00pm Petland, Racine  
HappyCappy90@hotmail.com

**Easter Egg Hunt**  
March 2nd 1:30pm  
Proper Paws University, Racine  
[www.properpawsuniversity.com](http://www.properpawsuniversity.com)

**Wine & Whiskers Wine Tasting & Silent Auction**  
March 7th 6:00pm  
Elmbrook Humane Society, Brookfield  
262-782-9261, [www.ebhs.org](http://www.ebhs.org)

**Get Lucky at HAWS (adoptathon)**  
March 14th 1:00pm  
HAWS, Waukesha  
262-542-8851, [www.hawspets.org](http://www.hawspets.org)

**Fish & Chicken Dinner Fundraiser**  
March 20th 4:00 - 7:00pm  
Dodge County Humane Society  
920-386-000, [www.dchs-wi.org](http://www.dchs-wi.org)

**April Stools Day with Elmbrook Humane Society**  
March 28th 11:00am - 2:00pm  
Brookfield Dog Park, Brookfield  
262-548-0923, [www.petlicious.com](http://www.petlicious.com)

**No Pile Left Behind**  
March 29th  
Mitchell Park Dog Exercise Area  
262-782-9261, [www.ebhs.org](http://www.ebhs.org)

**Groundbreaking & Reception**  
April 6th 5:00pm  
HAWS, Waukesha  
262-542-8851, [www.hawspets.org](http://www.hawspets.org)

**4th Annual Doggy Easter Egg Hunt**  
April 11th 9:00am - Noon  
Central Bark Doggy Day Care, Oak Creek  
[www.chewedforthoughts.com](http://www.chewedforthoughts.com), 414-704-2885,  
414-571-1500

**White Paws Pet Expo**  
April 11th 10:00am - 6:00pm  
Sunnyview Expo Center, Oshkosh  
[www.whitepawspetexpo.com](http://www.whitepawspetexpo.com)

**Pet Wellness Expo**  
April 18th 9:00am - 3:00pm  
Burlington High School, Burlington  
262-767-9392, [petwellnessexpo.com](http://petwellnessexpo.com)

**Tails of Love Book Signing**  
During Pet Wellness Expo, Burlington  
[captainrichie.net](http://captainrichie.net)

**Dog Wash Fundraiser**  
Benefiting Elmbrook Humane Society  
April 26th 11:00am - 3:00pm  
Petlicious Dog Bakery, Pewaukee  
Cost: \$15.00 for bath, \$10.00 nail trims  
262-548-0923, [www.petlicious.com](http://www.petlicious.com)

**2nd Annual Spring Bark Event**  
May 2nd 4:00 - 6:00pm  
Playtime Doggy Day Care, West Allis  
[www.playtimedog.com](http://www.playtimedog.com),  
[www.milwaukeekeedogparks.org](http://www.milwaukeekeedogparks.org)

**HAWS Annual Pet Walkathon**  
May 2nd Opens at 9:00am  
Minooka Park, Waukesha  
262-542-8851, [www.hawspets.org](http://www.hawspets.org)

**A Celebration of Pets Extravaganza**  
May 9th 9:00am - 3:00pm  
Country View Veterinary Service, Oregon, WI  
608-835-0551, [www.countryviewvets.com](http://www.countryviewvets.com)

**Door County Scotty Rally**  
May 15th & 16th  
920-493-5878, [dcscottierally@gmail.com](mailto:dcscottierally@gmail.com)

**WAAGR Perennial Sale**  
May 16th  
414-517-7725, [www.waagr.org](http://www.waagr.org)

**BREW Midwest's 7th Annual Beaglefest**  
May 16th 11:00am - 4:00pm  
Hinkley ParkPark Ridge, IL  
[www.brewbeagles.org](http://www.brewbeagles.org)

**Milwaukee Pugfest**  
May 17th 11:00am - 4:00pm  
Milwaukee County Sports Complex, Franklin  
414-764-0795, [www.milwaukeekeepugfest.com](http://www.milwaukeekeepugfest.com)

## PET PARTIES/PLAYGROUPS

### Pooch Playtime

Sundays, 1:30 - 2:15pm  
Wisconsin Humane Society  
414-ANIMALS, www.wihumane.org

### Yappy Hour

March 6th 6:30 - 7:30pm (reservations req.)  
March 20th 6:30 - 7:30pm (reservations req.)  
April 3rd 6:30 - 7:30pm (reservations req.)  
Petlicious Dog Bakery, Pewaukee  
262-548-0923, www.petlicious.com

### Playtime at the Playground

Saturdays, 9:00am - Noon  
Puppy Playground, Oak Creek  
414-764-PUPS

### Playgroups

Saturdays, 9:00 - 11:00am  
Ruffin' It Resort, Madison  
608-310-4299, www.ruffinitresort.com

### Pup Party

Sundays, 12:45 - 1:45pm  
For Pet's Sake, Mukwonago  
1-800-581-9070, www.forpetssake.cc

### Pup Social

Sundays, 5:45 - 6:15pm  
Best Paw Forward, Hartland  
262-369-3935

### Friday Night at the Movies w/ your Dog!:

March 13th 7:00 - 9:00pm  
April 17th 7:00 - 9:00pm  
May 8th 7:00 - 9:00pm  
Central Bark Doggy Day Care, Oak Creek  
Cost: \$2.00 per person, dogs are FREE!  
Reservations & movie feature: 414-571-1500

## PHOTO SESSIONS

### April 4th 10:00am - 4:00pm

(reservations suggested)  
Photo's with Easter Bunny by Slider Photo  
Petlicious Dog Bakery, Pewaukee  
262-548-0923, www.petlicious.com

### Art Show

Stephanie Bartz Dog Portraits  
Showing from May until end of June  
Magnolia & Co., Wauwatosa  
414-256-0885, www.sbartzphotography.com

## Event Calendar

Find additional information on  
these events and more at:

[www.fetchmag.com](http://www.fetchmag.com)

## A Unique Grooming Experience for Your Pet

### All Services Include:

Professional Hair Cut, Aromatherapy,  
Vitamin Conditioner, Nail Trimming,  
Ear Cleansing, UV Protector, Shine Spray

### Extra Spa Services Offered:

Blueberry Facials  
FURminator, Nail Polishing,  
Plus Much More

**15% Discount for Referrals**  
**Buy 6 Grooms, Get the 7th 1/2 Off!**

**EmBARK! Pet Spa**

1208 E. Oklahoma Ave. | Milwaukee, WI

(414)747-8830

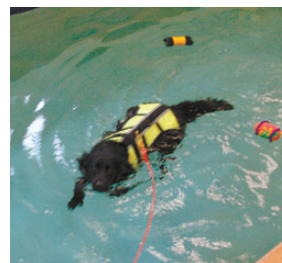
[www.embarkpetspa.com](http://www.embarkpetspa.com)

## "Breaking the Language Barrier Between You and Your Dog"

### Our Canine Spa and Training Center services include:

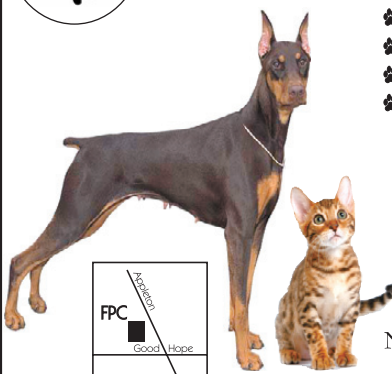
A Large Variety of Training Classes | Dog Day Camp  
Hydrotherapy Pool for Recreation and Exercise  
Massage Therapy | Self Dog Washes or "Baths By Us"  
Full Grooming Services | Retail Store

**DA WGS in MOTION LLC**  
Canine Spa and Training Center  
580 North Dekora Woods Blvd.  
Saukville, WI 53080  
262-268-8000  
[www.dawgsinmotion.com](http://www.dawgsinmotion.com)



Digital Medical &  
Dental X-rays

**FAMILY PET CLINIC**  
**262-253-2255**



- ✿ Dogs
- ✿ Cats
- ✿ Ferrets
- ✿ Grooming
- ✿ Ultrasound
- ✿ Rabbits
- ✿ Small Caged Pets
- ✿ Microchipping
- ✿ Specialist Consultation
- ✿ Medicine
- ✿ Surgery
- ✿ Endoscopy
- ✿ Dentistry
- ✿ OFA Hip X-rays

**We Treat Your Pet Like...  
A Member Of The Family!**

Dr. Scott C. Fellenz • Dr. Dara Morrison  
Dr. Kemberlie Anderson

Office Hours Monday thru Saturday by Appointment  
N73 W13583 Appleton Ave. • Menomonee Falls  
[www.FamilyPetClinic.org](http://www.FamilyPetClinic.org)

# A Hefty Issue

Keeping weight under control will help your dog live a healthier, happier life

Have you noticed your dog doesn't quite have the same spring in his step? Have the long winter months caused him to slow down and pack on a few pounds? Nope, weight gain isn't just a problem for people - it can happen to our dogs, too. But, learning to recognize and control weight issues early can help our pets live a longer and healthier life.

Pet obesity has become a more recognizable problem in the past ten years. According to a study performed in 2003 by the National Academies' National Research Council, one in every four dogs and cats in the Western world is overweight. Furthermore, a 2006 study by Pfizer Animal Health found that 47 percent of veterinarians felt their canine patients were obese, while only 17 percent of dog owners agreed.

Scott Fellenz, a veterinarian with Family Pet Clinic in Menomonee Falls says weight issues in dogs can contribute to health issues such as arthritis, diabetes and even cancer. "Studies show that dogs kept at an ideal weight can have as much as two years added to their overall lifespan, this can be a big difference when you consider that's 14 years in a human life," says Fellenz.

One of the most common, and serious issues for an obese dog is the development of diabetes. According to an article written by Holly Nash, DVM, MS, obesity causes an increase in the secretion of insulin in response to increased blood glucose levels in an

overweight dog. Because of added tissue in a chubby dog, the demand for insulin in the body increases. Thus, when the requirements for insulin exceed the ability of the body to produce insulin, diabetes develops. Once a dog develops diabetes, a strict regime of administered insulin, as well as an adjusted diet and exercise routine are required.

Arthritis is also a serious health problem for heavy dogs. According to Nash, 25 percent of overweight dogs develop serious joint complications over time. Extra tension on joints caused by an increased weight load can lead to the damage of certain ligaments, she says. The complications of arthritis can also have a tricky effect on the heavier dog. The more a dog weighs, the more stress is added to his joints, thus causing him to not want to move around as much. Keeping weight under control can help with arthritis management.

But, how can you tell if your pet is considered overweight or obese and on his way to experiencing health issues? Fellenz recommends taking a look at a body condition scale. According to the scale, if a dog is 40 percent over his normal body weight, he may be considered obese. "Even 20 percent overweight is quite significant for a dog and should be addressed," he adds.

While you should always consult a veterinarian to be sure, Fellenz says you can tell if your dog suffers from weight issues just by taking a closer look at his body shape. "If you're looking at him from the top, he should have a waistline. If he doesn't, that might signal a weight issue. But, you should also feel your dog to be sure - if you feel his ribs, not standing out too much, but visible

to the touch and to the eye, then he's probably at a healthier weight."

Some of the biggest issues causing weight gain in dogs are overeating and inactivity, adds Fellenz. "Cutting back on treats, controlling the diet and getting some consistent exercise are the best ways to tackle the issue. If those fail, prescription diets and supplements can also be applied."

According to an article published by the American Veterinary Medical Association, one of the biggest reasons dogs become overweight is from overfeeding by owners. Oftentimes owners use food as a way to show affection. This can include treats, table scraps and simply overfeeding at mealtimes. Dogs require no more than two small meals per day. While healthy treats are acceptable, overindulgence is one of the largest factors in weight gain. Fellenz says even adding green beans to a dog's diet can help make the animal feel more full, thus causing him to eat less - plus, as an added bonus, beans are good for him.

One of the important rules of thumb when it comes to obesity in pets is to avoid the problem before it starts. If you think your dog might have a weight problem, consult your veterinarian for advice and try changing your personal habits as well. Instead of lofting that treat at your dog, pick up his leash and take him for a walk. This might just be a reward for both of you.

**Jamie Klinger-Krebs** is a freelance writer who writes a regular monthly column "Pet Talk" on [www.gmtoday.com](http://www.gmtoday.com).

## Rock's Positive K-9 Training LLC

*Practical Obedience with Positive Control*  
**Specializing in Behavior Problems**

FRANK M. ALLISON III, APDT  
1-262-662-4160

[www.rockpositivek9training.com](http://www.rockpositivek9training.com)  
[www.allisonmethod.com](http://www.allisonmethod.com)



**April Stanley**  
Shears & Blade Sharpening

**EAGLE POINT SHARPENING**

Servicing Stylists,  
Pet Groomers & Barbers

262-673-7976  
cell: 262-389-5612  
APRILS215@AOL.COM

# RESCUES

## Airedale Terrier

ATRA-Airedale Terrier Rescue & Adoption  
715-526-5961, [www.aire-rescue.com](http://www.aire-rescue.com)  
[airedale@frontiernet.net](mailto:airedale@frontiernet.net)

## All Breed

HeavenlyHearts@wi.rr.com  
[www.heavenlyheartsrescue.org](http://www.heavenlyheartsrescue.org)

Operation Bring Animals Home S&R Team  
262-224-1964, [www.obahrescue.com](http://www.obahrescue.com)

Brew City Small Dog Rescue  
414-313-2040, [www.brewcityrescue.org](http://www.brewcityrescue.org)  
[Heather@brewcityrescue.org](mailto:Heather@brewcityrescue.org)

One Life @ A Time Small Breed Rescue  
414-517-7469, [www.onelifeatime.petfinder.com](http://www.onelifeatime.petfinder.com)

## American Water Spaniel

414-840-7411, [info@awsrescue.com](mailto:info@awsrescue.com)  
[www.awsrescue.org](http://www.awsrescue.org)

## Australian Shepherd

262-424-2820, [www.steppinstonerehabcenter.com](http://www.steppinstonerehabcenter.com)

## Basset Hound

Basset Buddies Rescue, Inc. 262-347-8823  
[info@bbrescue.org](mailto:info@bbrescue.org), [www.bbrescue.org](http://www.bbrescue.org)

## Beagle

BrewBeagle Rescue  
[midwest@brewbeagles.org](mailto:midwest@brewbeagles.org), [brewbeagles.org](http://brewbeagles.org)

## Bichon Frise

Little Buddies Rescue, 1-888-581-9070

## BPB Rescue

(Bordeaux, Pug & Boston Terrier)  
262-573-7837, [bordeauxdogue@gmail.com](mailto:bordeauxdogue@gmail.com)

## Border Collie

MidAmerica Border Collie Rescue  
414-449-0888, [www.midamericabcrrescue.com](http://www.midamericabcrrescue.com)  
[MidAmericaBCRescue@yahoo.com](mailto:MidAmericaBCRescue@yahoo.com)

262-424-2820, [www.steppinstonerehabcenter.com](http://www.steppinstonerehabcenter.com)

## Boston Terrier

WI Boston Terrier Rescue  
414-534-2996, [Ollie1022@sbcglobal.net](mailto:Ollie1022@sbcglobal.net)  
[www.wisconsinbostonterrierrescue.com](http://www.wisconsinbostonterrierrescue.com)

## Boxer

Green Acres Boxer Rescue of WI  
[info@greenacresboxerrescue.com](mailto:info@greenacresboxerrescue.com)  
[www.greenacresboxerrescue.com](http://www.greenacresboxerrescue.com)

## Brittany

American Brittany Rescue, 1-866-brit911  
[www.americanbrittanyrescue.org](http://www.americanbrittanyrescue.org)  
[info@americanbrittanyrescue.org](mailto:info@americanbrittanyrescue.org)

## Cavalier King Charles Spaniel

Cavalier King Charles Spaniel Rescue Trust  
262-253-4829, [rguarascio@wi.rr.com](mailto:rguarascio@wi.rr.com)

## Chesapeake Retriever

[www.crow.org](http://www.crow.org), 920-954-0796

## Chihuahua

Wisconsin Chihuahua Rescue, Inc.  
608-219-4044  
[www.wischihihuarescue.org](http://www.wischihihuarescue.org), [chigirl@wischihihuarescue.org](mailto:chigirl@wischihihuarescue.org)

Chihuahua Rescue U.S.A.  
[www.chihuahuarescueusa.com](http://www.chihuahuarescueusa.com)  
[info@chihuahuarescueusa.org](mailto:info@chihuahuarescueusa.org)

## Cocker Spaniel

Wisconsin Cocker Rescue  
262-255-0246, [WiCockerRescue@Juno.com](mailto:WiCockerRescue@Juno.com)  
[www.geocities.com/WiCockerRescue](http://www.geocities.com/WiCockerRescue)

Shorewood Cocker Rescue 262-877-3294  
[www.cockerrescue.net](http://www.cockerrescue.net), [elaine@cockerrescue](mailto:elaine@cockerrescue)

## Collie

Minnesota-Wisconsin Collie Rescue  
612-869-0480, [collietalk@aol.com](mailto:collietalk@aol.com), [www.mwcr.org](http://www.mwcr.org)

## Coonhound

American Black and Tan Coonhound  
920-779-6307, [www.coonhoundrescue.com](http://www.coonhoundrescue.com)  
[sjoch@yahoo.com](mailto:sjoch@yahoo.com), [jayne23@neo.rr.com](mailto:jayne23@neo.rr.com)

## Dachshund

Badger Dachshund Club, 847-546-7186

MidWest Dachshund Rescue, Inc.  
608-833-2992 evenings  
[rescue@mwdr.org](mailto:rescue@mwdr.org), [www.mwdr.org](http://www.mwdr.org)

## Dalmatian

Dal-Savers Dalmatian Rescue Inc.  
414-297-9210  
[loveadal@yahoo.com](mailto:loveadal@yahoo.com), [www.dalrescue.net](http://www.dalrescue.net)

Save Our Spots Dalmatian Rescue, Inc  
414-365-2679  
[sosdalrescue@earthlink.net](mailto:sosdalrescue@earthlink.net), [www.sosdalrescue.com](http://www.sosdalrescue.com)

## Doberman Pinscher

Wisconsin Doberman Rescue, Inc.  
414-536-4477, [www.wi-doberesue.org](http://www.wi-doberesue.org)  
[widoberesue@aol.com](mailto:widoberesue@aol.com)

Shadow's Doberman Rescue  
262-662-4838, [www.draffhorseinn.com](http://www.draffhorseinn.com)

## English Springer

English Springer Rescue America, Inc.  
715-845-8716, [www.springerrescue.org](http://www.springerrescue.org)  
[kcmcheinking@verizon.net](mailto:kcmcheinking@verizon.net)

## French Bulldog

French Bulldog Rescue Network  
414-744-5717, [beemeli@sbcglobal.net](mailto:beemeli@sbcglobal.net)

## German Shepherd

German Shepherd Rescue Alliance of WI  
414-461-9720, [www.gsrw.com](http://www.gsrw.com)  
[yur\\_rltr@execpc.com](mailto:yur_rltr@execpc.com) or [gsdrsq@hotmail.com](mailto:gsdrsq@hotmail.com)

Good Shepherd K-9 Rescue  
608-868-2050, [www.gsk9r.org](http://www.gsk9r.org)  
[pawmeadows@hughes.net](mailto:pawmeadows@hughes.net)

Badgerland German Shepherd Rescue  
24hr. Message service 414-921-0310  
[gsd4me@bgsr.org](mailto:gsd4me@bgsr.org), [www.bgsr.org](http://www.bgsr.org)

ARF's German Shepherd Rescue Inc.  
[www.arfrescue.com](http://www.arfrescue.com), [gsd@arfrescue.com](mailto:gsd@arfrescue.com)

WhitePaws German Shepherd Rescue  
[www.whitepawsgsr.com](http://www.whitepawsgsr.com), 920-606-2597  
[calpence@aol.com](mailto:calpence@aol.com)

Wisconsin German Shepherd Rescue  
920-731-1690, [CFilz@aol.com](mailto:CFilz@aol.com)

## German Shorthaired Pointer

Wisconsin German Shorthaired Pointer Rescue, Inc.  
414-327-5102 or 414-614-5102  
[lisa\\_gsprescuewi@yahoo.com](mailto:lisa_gsprescuewi@yahoo.com)  
[www.wgsprr.com](http://www.wgsprr.com), [www.wgsprr.petfinder.com](http://www.wgsprr.petfinder.com)

## Glen of Imaal Terrier

[lakerun@execpc.com](mailto:lakerun@execpc.com)

## Golden Retriever

GRRoW 888-655-4753  
[president@grow.org](mailto:president@grow.org), [www.GRRoW.org](http://www.GRRoW.org)

WAAGR 414-517-7725  
[www.waagr.org](http://www.waagr.org), [president@waagr.org](mailto:president@waagr.org)

## Greyhound

Greyhounds Only Inc., Adoption & Rescue  
414-559-0445 or 773-297-GREY (4739)  
[goinc@aol.com](mailto:goinc@aol.com), [www.greyhoundsonly.com](http://www.greyhoundsonly.com)

Greyhound Pets of America - WI  
414-299-9473, [www.gpawisconsin.org](http://www.gpawisconsin.org)

## Herding

Southeastern Wisconsin Herding Dog Rescue  
262-554-2048, [www.wiherdingrescue.com](http://www.wiherdingrescue.com)

## Irish Setter

Irish Setter Club of Milwaukee  
920-734-6734, [muttsgo@aol.com](mailto:muttsgo@aol.com)

## Irish Wolfhound

262-968-3421, 262-547-3705  
[jbanasak@yahoo.com](mailto:jbanasak@yahoo.com), [marussell01@centurytel.net](mailto:marussell01@centurytel.net)

## Italian Greyhounds

[star279@juno.com](mailto:star279@juno.com), 414-559-0445  
[www.midwestigrescue.com](http://www.midwestigrescue.com)

## Jack Russell Terrier/All Dog Rescue

414-747-8726, 414-297-5104  
[pensjackpack1@att.net](mailto:pensjackpack1@att.net), [www.ffari.org](http://www.ffari.org)

## Labrador

Labrador Education and Rescue Network  
847-289-PETS (7387), [www.labadoption.org](http://www.labadoption.org)  
[learn dogs@labadoption.org](mailto:learn dogs@labadoption.org)

The Labrador Connection  
414-299-9038, [www.labradorconnection.org](http://www.labradorconnection.org)

Labs N More 414-571-0777  
[LabsNMoreRescue@yahoo.com](mailto:LabsNMoreRescue@yahoo.com)  
[www.LabsNMoreRescue.petfinder.com](http://www.LabsNMoreRescue.petfinder.com)

## Maltese

Northcentral Maltese Rescue Inc.  
262-633-9371, [malteserescue@hotmail.com](mailto:malteserescue@hotmail.com)  
[www.malteseresue.homestead.com](http://www.malteseresue.homestead.com)

## Mixed Breed

Fluffy Dog Rescue, [www.fluffydog.net](http://www.fluffydog.net)

## Neapolitan Mastiff

[www.neorescue.net](http://www.neorescue.net), [mhweglarz@msn.com](mailto:mhweglarz@msn.com)

## Poodle

920-625-3709  
[poodledubofamerica.org](http://poodledubofamerica.org), [mj.doege@yahoo.com](mailto:mj.doege@yahoo.com)

## Pug

NIPRA (Northern IL Pug Rescue & Adopt.)  
[nipra@pugrescue.org](mailto:nipra@pugrescue.org), [www.pugrescue.org](http://www.pugrescue.org)

Pug Hugs, Inc.  
[www.MilwaukeePugFest.com](http://www.MilwaukeePugFest.com), 414-531-9301

## Rat Terrier

Wisconsin Rat Terrier Rescue INC.  
608-697-7274, [wrrtr@bigfoot.com](mailto:wrrtr@bigfoot.com)

## Rottweiler

True Hearts of Rottweiler Rescue (THORR)  
[www.thorr.org](http://www.thorr.org), [trueheartsofrottrescue@yahoo.com](mailto:trueheartsofrottrescue@yahoo.com)

Wisconsin Rottweiler Rescue  
608-224-0272, [www.wirottrescue.org](http://www.wirottrescue.org)

MidAmerica Rottweiler Rescue  
[www.adoptarott.org](http://www.adoptarott.org)

## Saint Bernard

AllSaints Rescue  
414-761-6305, [www.allsaintsrescue.com](http://www.allsaintsrescue.com)  
[allsaintsrescue@earthlink.net](mailto:allsaintsrescue@earthlink.net)

WI St Bernard Rescue  
414-764-0262  
[wstresq@jmuch.com](mailto:wstresq@jmuch.com), [www.wstresq.com](http://www.wstresq.com)

## Shar Pei

Shar Pei Savers  
[www.sharpeisavers.com](http://www.sharpeisavers.com),  
[info@sharpeisavers.com](mailto:info@sharpeisavers.com)

## Shih Tzu

Fuzzy Pawz Shih Tzu Rescue of WI Inc.  
[fuzzypawz@gmail.com](mailto:fuzzypawz@gmail.com)  
[www.fuzzypawz.org](http://www.fuzzypawz.org), 414-731-1682

New Beginnings Shih Tzu Rescue  
920-722-3070, [AWood52140@aol.com](mailto:AWood52140@aol.com)  
414-801-3763, [living\\_floor\\_maps@yahoo.com](mailto:living_floor_maps@yahoo.com)  
[www.nbstr.org](http://www.nbstr.org)

## Standard Schnauzer

Standard Schnauzer Club of America Rescue  
[schnauzer@gmail.com](mailto:schnauzer@gmail.com), [www.standard schnauzer.org](http://www.standard schnauzer.org)

## Vizsla

Central Wisconsin Vizsla Club (CWVC)  
Grusnick@wi.rr.com, 414-759-4161, [www.cwvc.org](http://www.cwvc.org)

## Westie

Wisconsin Westie Rescue, Inc.  
920-882-0382, [westies@new.rr.com](mailto:westies@new.rr.com)  
[www.wisconsinwestierescue.com](http://www.wisconsinwestierescue.com)

## Yorkshire Terrier

Yorkshire Terrier Rescue of Wisconsin  
414-747-0879, [shyyorkiemom@yahoo.com](mailto:shyyorkiemom@yahoo.com)

# Not Your Average {Ball and Stick}

When my dog, Louie, and I were invited to a local pet bakery for the one and only formal dog birthday party that we ever attended, the burning questions were "What do you buy a dog that has everything? How much does one spend for a doggy birthday party gift? Does a dog need a birthday card as he can't read it?" In the end, we got a cheap card and for \$7 we purchased a NoNoyz Ultra Soniks dog toy with a squeaker that supposedly only the dogs could hear. When I squeezed it, Louie had no reaction. However, the birthday dog's mom said when she squeezed it at home, two out of her three dogs would whip their heads around to look at her and come running. We were a success!

According to the American Pet Products Manufacturers Association, Inc. (APPM), Americans will spend \$43.4 billion on their pets in 2008. To give a perspective of how quickly that amount has grown, just 10 years ago the amount was \$23 billion. The overflowing laundry basket of toys in our house is testament to the fact that we perform our share of dog toy purchases.

While Louie has many toys, there

are few that have stood the test of time meaning that he did not lose interest five minutes after receiving them. One such toy is a large purple jar with a hard, spiky rubber ball on top and a chew rope stuck in the open neck of the bottle. The bottom of the jar unscrews so treats can be placed inside. Once screwed shut the only way the treats can come out is for Louie to manipulate the chew rope so that a few trickle out. While he has found it effective to pick up and drop the whole toy to get some treats, it takes awhile to empty and, lo and behold, I have a dog that is occupied for awhile.

Looking outside the canine world is another option to locate an unusual toy. Chad Gettelman and Tricia Roxbury have a horse ball that their three year old boxer, Ally, likes to play with in the backyard. The horse ball is somewhat reminiscent of those giant Hippity Hop balls we sat on as kids and bounced down the sidewalk. About nine inches in diameter, horse balls have a handle that makes it easy for the dog to grab. According to Chad and Tricia, Ally has "destroyed just about every other kind of toy we got her, but because of the horse ball's molded rubber, it's almost indestructible. She loves to grab it by the handle and strut around the yard with it, keeping it just out of reach of Ozzy, our 6 month old

boxer. Ozzy's just about old enough to handle it himself, but Ally still doesn't want to give up her favorite toy!"

One of Pat Laganowski's five dogs' favorite toys lets them tell her that they love her. It is a pink fleece stuffed toy that looks like a purse. It has ruffles at the bottom and a twisted string rope handle. When squeezed, it makes a smooching noise and then says "I love you." Pat says, "There had been an event where one of my miniature Schnauzers had been a bad boy. I was scolding him when he ran over to pick up this toy, squeezed it and brought it to me. It made the smooching sound and said 'I love you!'" It was comical, kind of like, 'yes I know, but I still love you'. My husband and I couldn't help but laugh."

Even dogs are going green nowadays. Organic cotton toys are now making their appearances in pet stores and catalogs. For about \$15, stores are offering stuffed animals as dog toys made with organically grown cotton. The fibers are not bleached or processed in any way which the manufacturers say reduces allergy levels in dogs.

Just as kids like to make toys out of things like the box that the refrigerator came in, dogs also make toys out of things that might seem a bit odd. Near where Michael Mortag works, there used to be a white German shepherd at a gas station that played with a five foot section of a railroad tie. "Just a dog with a stick" laughs Michael. However, closer to home, Michael's German wirehaired pointer, Rasierrmesser (Razor for short), is crazy over bras! Anyone who accidentally leaves one lying around will find that Razor now has a new chew toy.

From the durability of the horse ball to the "laugh-ability" of the "I love you" toy, there are many choices for that next dog birthday party. The toys our dogs love are as varied as the dogs we love.

**Marie Tubbin** loves spending time with her two best buddies, her husband, Mike and her dog, Louie. She met Mike at Burger King and Louie at HAWS and considers those two of the luckiest days of her life.



## Dog Daycare and Self-Serve Dog Wash

8411 South Liberty Lane  
Oak Creek  
414-764-PUPS

[www.puppyplaygroundwi.com](http://www.puppyplaygroundwi.com)

(We are located between Forest Hill Avenue and Puetz Road—West of Howell Avenue)

**WE ARE YOUR BEST FRIEND'S  
FAVORITE PLAYGROUND!**  
Your canine pal's newest friends are waiting!

Dog Training now available at our location! Puppy - Adult - Advanced and more!  
Call Sirius Companion Dog Training at 414-698-3223 for free brochure and schedule.

# Animal Motel



**Pet Care Services for Precious Pets**  
13175 W. Silver Spring Road  
(262) 781-5200  
The Gutknecht Family

**SINCE 1960**

[www.animalmotel.net](http://www.animalmotel.net)

**Boarding ♥ Grooming ♥ Training ♥ Pet Relocation**

**"Let's Talk About Boarding Your Pet"**  
An Informational Session and Kennel Tour  
**2nd Saturday of Every Month**  
**1:00pm Sharp**  
No Reservations Required. Here's your Chance!  
Get a behind the scenes look at your pet's favorite vacation spot!

**MEMBER**  
**ABKA**  
American Boarding  
Kennels Association

continued from page 15

blanket jackets, hoodies, and a line of rubber dog boots for protection against snow, ice, or hot sand.

Kathleen Fold, also at Bark 'n Scratch dresses her two rescued Greyhounds, also for practical reasons. "They need coats for the winter in this climate and protection from the rain," she says. "Even in the house, keeping the thermostat lower, I have house sweaters for them made out of fleece." Greyhounds are really easy to dress says Fold. "As retired racers, they're used to wearing their silks, so they're already comfortable having something on their bodies." Those "silks" display the racers' numbers.

**Fun, Vibrant Pet Boutique | Enjoyable Place to Shop**



**3 GOLDENS AND A GATOR**  
*Pet Boutique*

**Jennifer Hartman**, Owner  
5200 Douglas Avenue, Suite C  
Racine, WI 53402

**Ph 262-752-9010**  
**Fx 262-752-9030**  
[3goldensandagator@att.net](mailto:3goldensandagator@att.net)

Bay View's The Natural Pet owner Kim Hecker also claims, "People in this area tend to be more practical. I think the little dogs are dressed up in coats and sweaters to keep warm, because they need it." Some of her customers buy the bigger coats for Retrievers or Ridgebacks. "And when their pets get older, people buy them flannel coats for warmth. But no dogs come in here dressed in dresses."

So there you have it. We live in the Midwest where we're known as plain spoken, salt of the earth, and hard-working folks. And when it comes to dressing our dogs, you can add practical to that list. We're not really looking for the \$3,000 Garden Party Swarovski-jeweled dress, but if you should change your mind, you now know where to find it!

**Jean Scherwenka** loves dogs, writing, and the opportunity to combine the two in her articles for Fetch Magazine.

# ATTENTION! DOG OWNERS

You love your dog, but you *don't* love having to clean up the mess in your yard. *It's a nasty job.* Sure, somebody has to do it, but that "somebody" doesn't have to be YOU! **CALL NOW for Spring Clean Up!**



**CT Scoops LLC**  
Pet Waste Removal Service

**CALL Scoops**  
Pet Waste Removal Service, LLC.  
**262-366-7949**  
[www.scoopsremovals.com](http://www.scoopsremovals.com)

**APaws**  
The Association of Professional Animal Waste Specialists  
PROUD MEMBER

Complete clean up and removal of canine waste from yards. Special Occasion and One-time Clean Up options also available. **Licensed, Bonded, Insured & Reliable!**

Mention this ad and get **\$15 OFF** first month of service!

## Dogs Around Town

(Reader-submitted photos of neighborhood canines.)

Now Online at:

[www.fetchmag.com](http://www.fetchmag.com)

# Wisconsin Lodging

## *Pet-friendly Places*

### BOULDER JUNCTION



#### Evergreen Lodge

Leave the stress behind and enjoy a traditional "up north holiday".

Pets and Families Welcome.

On secluded Little Crooked Lake.

1-3 bedroom Lakeside log cabins

Hot Breakfast • Screen porches

Boats/motors • Campfires • 3 seasons

6235 Evergreen Lane, Boulder Junction, WI 54512  
877/947-2132 • 715/385-2132 • [www.evergreenlodgewi.com](http://www.evergreenlodgewi.com)

### JANESVILLE



#### Motel 6

Stay with us at Motel 6 Janesville and take advantage of newly remodeled guest rooms, free wireless internet, free morning coffee, and our location right next door to a Cracker Barrel restaurant! Best yet pets stay **FREE** at Motel 6. Call today to check out our pet friendly hotel!

3907 Milton Avenue, Janesville, WI 53546  
608/756-1742 • 800/466-8356 • [www.motel6-janesville.com](http://www.motel6-janesville.com)

### DEFOREST



#### Comfort Inn & Suites

The surrounding area features numerous museums, theaters, galleries and the entertainment venues. A variety of restaurants and cocktail lounges are nearby, including the lobby bar at the hotel. Guests are provided many fabulous amenities, including: continental breakfast, coffee, wireless high-speed Internet access and local calls.

5025 County Road V, DeForest, WI 53532  
608/846-9100 • [www.choicehotels.com/hotel/wi120](http://www.choicehotels.com/hotel/wi120)

### LAKE GENEVA



#### T.C. Smith Historic Inn B&B

Rekindle your spirit by relaxing in comfort in the sitting room, living room and formal dining room at the spacious historically significant inn. Rejuvenate yourself in the fabulous private baths complete with spacious heated whirlpools, back massage systems, steam bath systems and elaborate spa showers.

834 Dodge Street, Lake Geneva, WI 53147  
262/248-1097 • [www.tcsmithhistoricinn.com](http://www.tcsmithhistoricinn.com)

### EAU CLAIRE



#### The Plaza Hotel & Suites Conference Center

The Plaza Hotel & Suites, invites you to dine casually in Burgundy's Restaurant where "Kids Eat Free" and the spirit is alive at Brewski's Pub & Grill. With 233 finely appointed rooms, 30 whirlpool rooms, high speed wireless internet, and complimentary continental breakfast, The Plaza is your "Home Away From Home."

1202 W. Clairemont Avenue, Eau Claire, WI 54701  
715/834-3181 • [www.plazaeauclaire.com](http://www.plazaeauclaire.com)

### OCONOMOWOC



#### Olympia Resort: Hotel, Spa & Conference Center

Olympia Resort & Spa is the ideal atmosphere for you and your pets. We accept every size of pet from small to large. We host national specialty dog shows and are booking shows for 2010-2014. Call today to make a reservation for you and your pets at 800-558-9573.

1350 Royale Mile Road, Oconomowoc, WI 53066  
800/558-9573 • [www.olympiaresort.com](http://www.olympiaresort.com)

### HAYWARD



#### Ross' Teal Lake Lodge & Teal Wing Golf Club

Our traditional lakeside resort welcomes you and your 4-legged family. Individual guest homes, for 2-10 people, plus space for walks (pet towels available for lake swimming!). Daily rates any time of year, specials and packages. Pool, homecooked meals and golf on premise in season.

12425 N. Ross Road, Hayward, WI 54843  
715/462-3631 • [www.teallake.com](http://www.teallake.com)

### WAUPACA



#### Best Western Grand Seasons Hotel, Conference Center and Indoor Waterpark

Located near the famous Waupaca Chain O'Lakes and centrally located in Wisconsin. Experience our warm hospitality, pet friendly guestrooms, doggie treats on arrival and assortment of leisure amenities and City Dog Park nearby.

110 Grand Seasons Drive, Waupaca, WI 54981  
877/880-1054 • [www.bestwesternwaupaca.com](http://www.bestwesternwaupaca.com)

Dig up more information at [www.WisconsinLodging.info](http://www.WisconsinLodging.info)



Order your  
free booklet at  
[www.wivrc.com](http://www.wivrc.com)

## We'd Rather Prevent Emergencies Than Treat Them

The **Wisconsin Veterinary Referral Center (WVRC)** wants to keep your dog out of harm's way. That's why we offer the Seasonal Pet Tips below and a FREE Pet Emergency Care Booklet on our website. It's important to know what to do in an emergency; and comforting to know we provide the highest quality emergency care and the deepest sense of compassion.



The Midwest's Leader in Veterinary Specialty & Emergency Care

**Waukesha:** ½ mile South of I-94/Exit 294 - (866) 542-3241

**Grafton:** ½ mile West of I-43/Exit 92 - (262) 546-0249

[www.wivrc.com](http://www.wivrc.com)

## Spring Pet Tips

**Stinging Insects:** Some dogs try to catch bees and a sting can cause a reaction. Signs of a sting are scratching/rubbing head on the ground, bumps or a swelling around the sting, excessive salivation, or generalized facial swelling. Some dogs can be allergic to stings. If your dog has a severe reaction, get veterinary treatment immediately.

**Pesticides:** Chemical pesticides are applied as tree sprays, garden foggers, and are in a variety of fruit and vegetable sprays. Keep dogs away from the area under and around freshly treated trees, gardens, and flower beds for at least 24 hours.

**Fertilizers & Lawn Treatments:** Before applications remove water or food dishes from the yard. Keep your dog inside while chemicals are being applied and then off the treated grass for at least 24 hours afterwards. If your dog does come in contact with a freshly treated lawn, wash its paws with soap and water immediately. Contact with herbicides can cause vomiting, excess salivation, problems with the central nervous system, and even sudden death.

**Rodenticides & Pellets:** Rodent poisons may not cause vomiting or other typical symptoms of poisoning. But they contain a compound that causes a life-threatening bleeding disorder and can cause death within a few days. Also, never scatter slug or snail killer pellets as dogs find the small blue poisonous pellets tasty. Instead, use a commercial bait trap or pellet holder that is out of reach to pets.

Find @  
**www.fetchmag.com**



Read this issue & more at [www.fetchmag.com](http://www.fetchmag.com)

Dogs Available for Adoption  
Wisconsin Dog Parks  
Event Calendar  
Canine Marketplace  
300+ Articles

**New 2009 Series**

# **FIRST AID FOR PETS<sup>SM</sup>**

**Veterinarian-approved • Life-saving**

**The original 3-hour class that  
presents care and treatment for  
46 common medical emergencies**

**Rated "excellent" by 98%  
of past attendees!**

**Handsome certificate awarded  
upon completion**

*"One of the best investments I've made..."*

*"I used what I learned and  
saved my dog's life..."*

*"Great instructor..."*

*"My vet recommended the class..."*

*"Fantastic class..."*



## **Some of the class subjects....**

3 steps to control major bleeding  
Assemble a first aid kit to handle emergencies  
Identify & treat life-threatening conditions  
Treat shock before it becomes fatal  
Learn CPR and rescue breathing

Critical care for diabetic emergencies  
Understanding and treating seizures  
Dangers of communicable diseases  
Steps to avoid in treating burns  
Saving your pet from poisoning

### **CLASSES HOSTED BY HAWS IN WAUKESHA**

(all classes 1pm to 4pm)

**March 7, April 18, May 2, June 6, July 18, August 8,  
September 12, October 3, November 7, December 5**

### **CLASSES HOSTED IN MADISON**

(all classes 2pm to 5pm)

**March 21, April 25, May 16, June 27, July 25, August 15,  
September 26, October 17, November 21, December 19**

**CLASSES FILL UP FAST. REGISTER TODAY!**  
**FOR INFORMATION OR TO REGISTER CALL 262/879-0165**

Unable to attend? Purchase the complete program in a 125 page course manual.